



ValkPro+ South Landscape



ValkPro+ East-West



ValkPro+ Max South

Datasheet ValkPro+ | ValkPro+ East-West | ValkPro+ Max

The concept

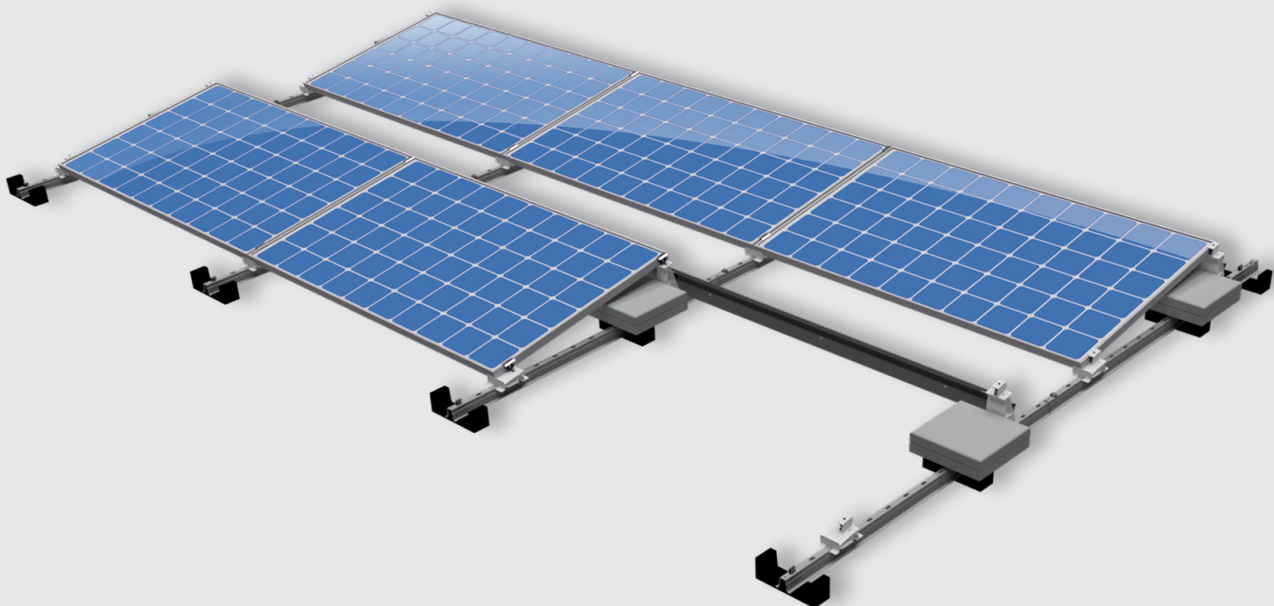
- Mounting system for PV-panels on flat roofs (commercial and domestic).
- For south and east-west configurations.
- Fixed tilt angle of 10° (landscape or portrait).
- Low ballast, shielded system with wind deflectors (south).

ValkPro+ vs. competitive systems

- Most cost effective solution.
- All metal connections, no plastic. This ensures high strength and reliability and makes the system easy to ground and for equalization of potential.
- Also suitable for roofs higher than 25 mtrs.
- Can be placed with ballast only on flat roofs with a maximum slope up to 5°. On roofs with a bigger slope, the system needs to be fixed to the roof.
- Universal integrated panel clamps (28-50 mm frame height).
- Suitable to be placed on roofs with gravel, "green roofs" or fixed on steel structures above the roof.
- Elevated mounting on roof for guaranteed drainage.

Additional features

- Designed and calculated according to latest building regulations.
- Low ballast and roof load, thanks to the use of wind deflectors and coupled rows.
- Easy and fast installation, thanks to limited number of parts and screw joints.
- Maximum logistical advantage, thanks to limited number of different parts and dimensions.
- Smart solutions to hold cables and cable baskets.
- Easy to disassemble.



ValkPro+ South Landscape

CONTACT DETAILS | DEVELOPER AND PRODUCER OF SOLAR MOUNTING SYSTEMS

Van der Valk Solar Systems + International

Westernesse 18 - 2635 BG Den Hoorn, The Netherlands
+31 174 25 49 99
sales@valksolarsystems.com

Valk Solar Systems UK + IE

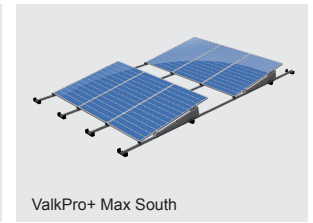
+44 1304 89 76 58
sales@valksolarsystems.co.uk

Valk Solar Systems Ibérica

+34 699 326 544
ventas@valksolarsystems.es

Valk Solar Systems Nordics

+46 7 25 27 00 66
sales@valksolarsystems.se



Datasheet ValkPro+ | ValkPro+ East-West | ValkPro+ Max

Panel formats

- ValkPro+ (south & east-west) is standard applicable for panels with the following dimensions:

Configuration	"Panel length min [mm]"	Panel length max [mm]*	Panel width min [mm]	Panel width max [mm]	Pitch [mm]*
L10° South	1520	2320	977	1250	1300
					1400
					1500
					1600
L10° East-West	1300	2320	977	1070	2300
			1071	1120	2400
				1170	2500
			1171	1220	2600
P10° South	1559	2200	900	1500	2100
					2200
					2300
					2400
P10° East-West	1559	1680	900	1500	3500
	1681	1730	900	1500	3600
	1731	1830	900	1500	3800
	1831	2035	900	1500	4200
	2036	2085	900	1500	4300
		2135	900	1500	4400
	2136	2185	900	1500	4500
Max P South	1700	2500	900	1500	3000
Max P East-West	2096	2172	900	1500	4500
	2173	2268	900	1500	4700
		2369	900	1500	4900
	2370	2471	900	1500	5100
Max L East-West	1700	2400	1134	1134	2500

CONTACT DETAILS | DEVELOPER AND PRODUCER OF SOLAR MOUNTING SYSTEMS