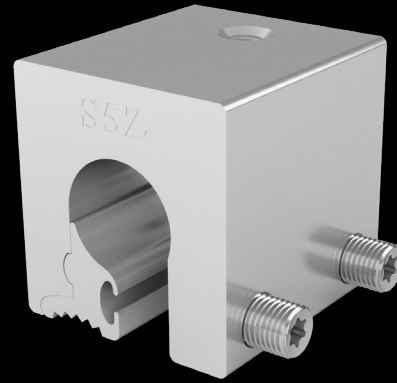




mounting
systems



Set No.
720-1965

Ref-No.
805-0174

S-5 Z-Clamp

Roof cladding	Fastening on metal roofs with round seam profiles without drilling
Material	Aluminium
Dimensions	51 x 46 x 49 mm (L x W x H)
Weight	0.259 kg
Fastening	2 grub screws allow the clamp to be attached to the roof
Accessories	806-0529 Stainless steel A2 screw M8x16, for S-5 clamps
Certification	Comprehensively tested and approved by the building authorities: DIBt abZ aBG No. Z-14.4-719 (until 5/2027)
Additional information	The S-5!® aluminium Z-clamps are specially designed for metal roofs with round seam profiles with a diameter of up to 23 mm, e.g. from Kalzip®, Bemo®, Aluform, Kingspan, Euroseam, etc.. The special fitting part on the inside of the clamps enables a perfect force and form fit on the rebate without penetration. This allows the Z-clamps to absorb very high loads. The Z-clamp with 2 grub screws, fitting part, an M8 thread on the top side and an M8x16 stainless steel screw is used for high loads.

Dimensions

