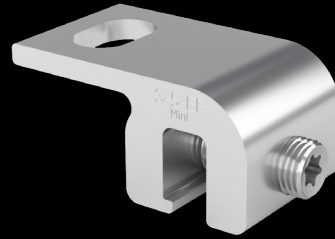




mounting
systems



Set No.
720-1686

Ref-No.
805-0075

S-5 E-Mini Fl Clamp

Roof cladding	Fastening on double folded standing seam roofs without drilling
Material	Aluminium
Dimensions	50 x 25 x 24 mm (L x W x H)
Weight	0.044 kg
Fastening	1 grub screw allow the clamp to be attached to the roof
Accessories	806-0529 Stainless steel A2 screw M8x16, for S-5 clamps
Certification	Comprehensively tested and approved by the building authorities: DIBt abZ aBG No. Z-14.4-719 (until 5/2027)
Additional information	The S-5!® E-clamps have an opening slot of 7 mm and offer professional installation solutions on the craftsman's double folded standing seam roof. The E-clamps, made of aluminium, are suitable for all roofing materials except copper. In addition to the very high holding force, these clamps are characterised by quick, easy and penetration-free installation.

Dimensions

