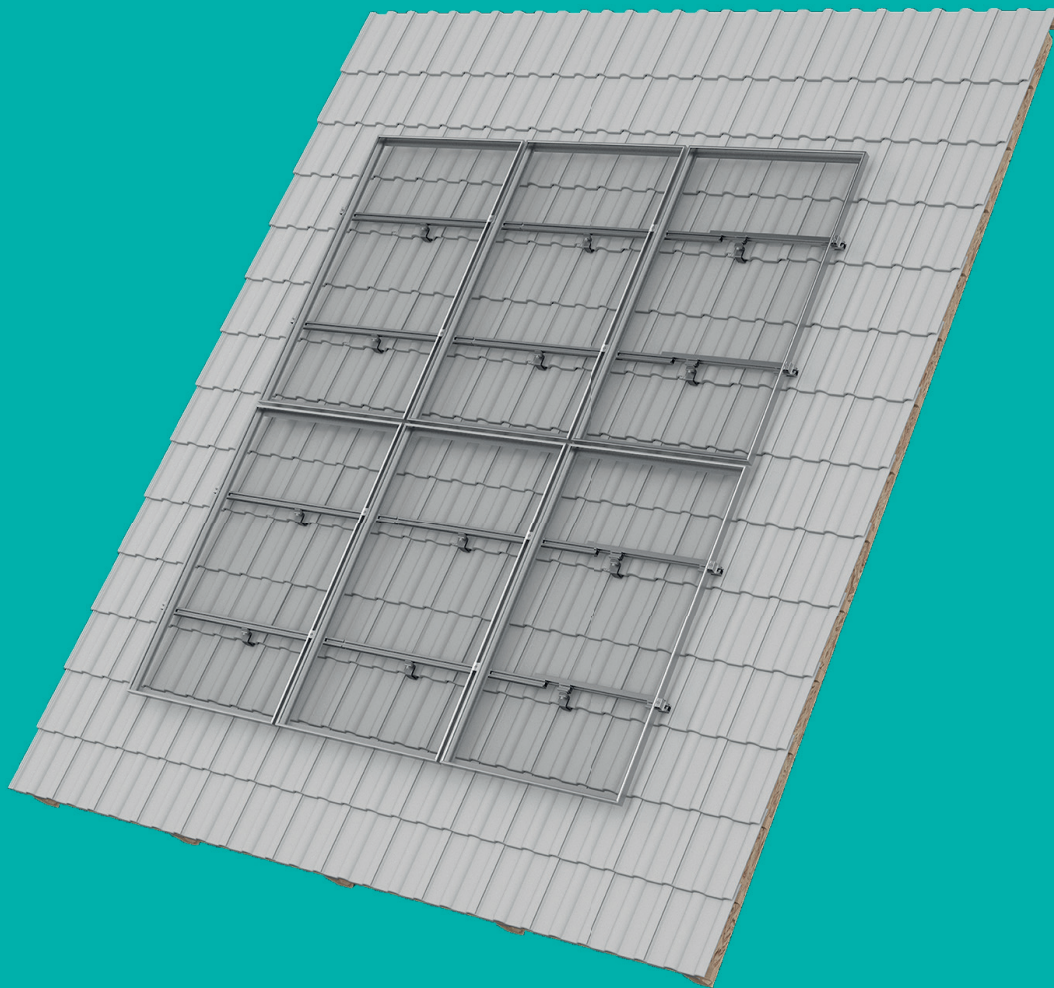




mounting
systems

Pitched ProLine Installation manual



Content

1	Introduction	3
1.1	Short Description	3
1.2	About These Instructions	3
1.3	Warnings	4
1.4	Safety	4
2	Technical Description	5
2.1	System Overview	5
2.2	Components	6
3	Important Mounting Information	8
3.1	Conditions of Use	8
3.2	Mounting Preparations	8
3.3	Mounting Aids and Required Tools	8
3.4	About the Instructions	8
4	Planning the Module Area	9
5	Installation of Roof Fasteners	11
5.1	Preparation of the Roof Substructure	11
5.2	Placing the Roof Fasteners	13
5.3	Placing the Roof Tiles	14
6	Installing the Base Rails	15
6.1	Placing and Alignment of the Base Rails	15
6.2	Connection of the Base Rails	17
6.3	Placing the End Caps	18
7	Installing the Clickstones	19
8	Module Installation	21
8.1	Fastening the Modules on the Outer Side	21
8.2	Fastening the Modules on the Inner Side	22
8.3	Fastening Additional Module Rows	23
9	Options: Installing Additional Roof Fastener	24
9.1	Installation of the Heavy Load Roof Hooks	24
9.2	Installing Adjustable Roof Hooks	25
9.3	Installation of Plain Tile and Slate Roof Hooks	26
9.4	Installing Hanger bolts	28
9.5	Roof connection with hanger bolt	30
10	Option: Installation of the CCS-rail	31
10.1	Placing and Alignment of the CCS-rail	32
10.2	Connection of the CCS-rail	32
11	Option: Cross Rail Installation	33
12	Frameless Module Installation	34

1. Einführung

1.1 Kurzbeschreibung

The Pitched ProLine on-roof system is a robust mounting system for the installation of PV modules on pitched roofs. It consists of aluminium support rails and all necessary small parts for the fastening of the rails to the roof, the modules on to the rails as well as for the connection of the components with each other. Pitched ProLine allows for both portrait and landscape installation of the modules.

1.2 About These Instructions

Content

These instructions describe the mounting of the on-roof system Pitched ProLine and all system-specific information for planning, components and safety warnings. The first part of the Instructions (chapters 5–8) demonstrates the complete installation of framed modules. Thereafter, (chapters 9–11) the mounting steps for certain specific roof types and material options are explained.

Applicable documents

In addition to this document, the document "Installation Instructions for PV Mounting Systems: General Part" is part of each product delivery. This document describes the general applicable information for Mounting Systems products on standardisation, safety, transport, maintenance, disassembly and disposal. Both the present Instructions and the "Installation Instructions for PV Mounting Systems: General Part" are an integral part of the system Pitched ProLine and must be adhered to for each installation.

It is crucial to carefully read these Instructions as well as all applicable documents prior to carrying out any installation, maintenance or disassembly work. You are provided with the information required for the safe and complete installation, maintenance and disassembly. Should you have any questions, please contact Mounting Systems GmbH.

User group

Mounting Systems GmbH's installation instructions are intended for the following persons (user group):

Skilled personnel

Skilled personnel are individuals who, on the basis of their professional training, are able to execute installation, maintenance, and disassembly work appropriately.

Instructed personnel

Instructed personnel are individuals who have been instructed and taught appropriately regarding the assigned tasks and the possible risks in the event of improper conduct. An instructed individual must have received instructions regarding the required safety policies, precautions, relevant regulations, accident prevention regulations, as well as operating conditions and must have demonstrated his/her competence. The implemented work must be approved by skilled personnel.

Orientation guide

The following visual aids will make installation easier.

Piktograms:



This symbol indicates important information and useful tips. he Hinweise.



This symbol indicates tips and tricks to make processes easier.

1.3 Warnings

The warnings used in these Mounting Instructions indicate safety-related information. They include:

- Warning symbols (pictograms)
- Signal words for the identification of the hazard level
- Information about the type and source of the hazard
- Information about potential consequences in case of the hazard being disregarded
- Measures for the prevention of hazards and the prevention of injuries or damage to property.

The signal words of the warnings respectively indicate one of the following hazard levels:



DANGER!

Indicates a great and extraordinary danger, which may result in death or serious injury if ignored.



WARNING!

Indicates a potentially dangerous situation, which may result in serious or medium injury or damage to the property.



CAUTION!

Indicates a potentially dangerous situation, which may result in minor injuries or damage to the property if ignored.



ATTENTION!

Indicates potential danger, which can result in damage

1.4 Safety

All generally applicable safety regulations for products of Mounting System GmbH can be viewed in the document "Installation Instructions for PV mounting systems: General Part".

Please read this document carefully and adhere to the described points - only use the system for its intended purpose, comply with the obligations of the building proprietor and follow both the general and specific safety instructions.

In addition, please observe the specific safety instructions which precede the process steps in the present product-specific Mounting Instructions.

2. Technical Description

2.1 System Overview

In the following, the most important system parts are described. The design of the individual system components can vary, or additional components may be required, depending on:

- Type of roof (substructure and roof cladding)
- Type of module
- Number of modules and configuration
- Local conditions

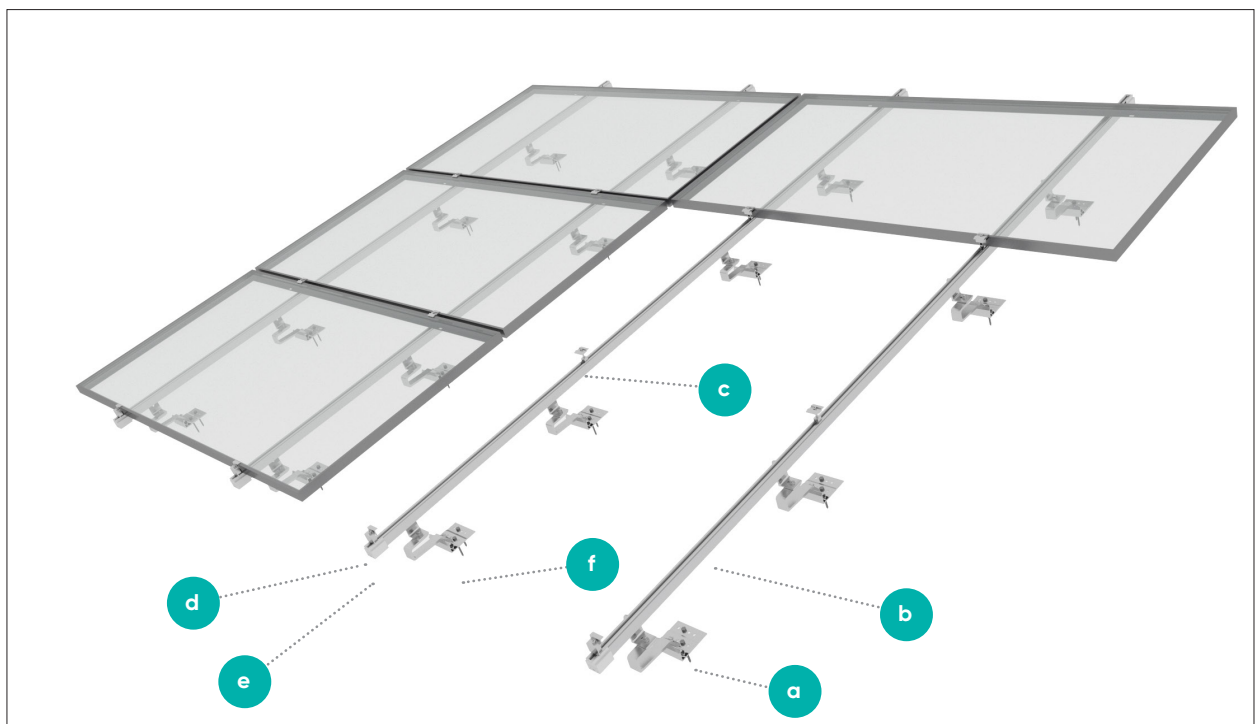


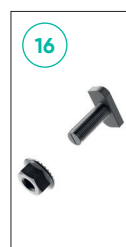
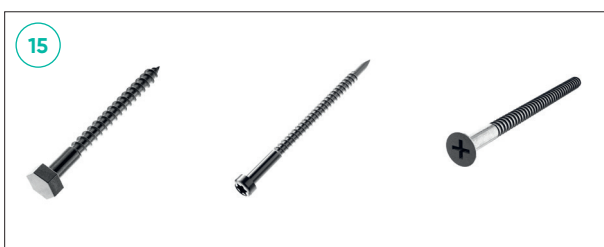
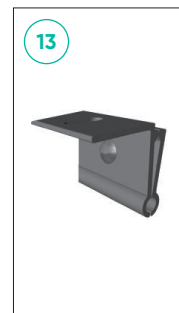
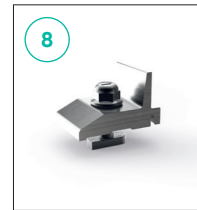
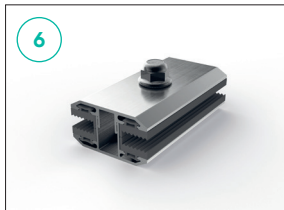
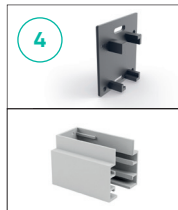
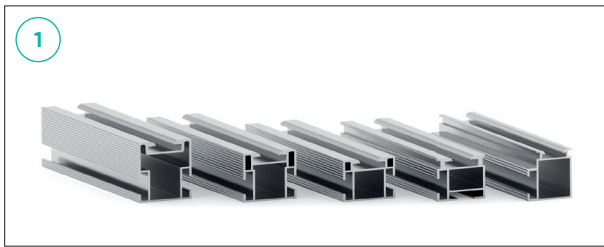
Image 2.1-1 Landscape Installation

Pitched ProLine Components:

- a Roof hook
- b Base rail
- c Module middle clamp
- d Module end clamp
- e End cap
- f Wood screw

2.2 Components

In the following all mounting system parts of the Pitched ProLine are shown, which can be included in the scope of the delivery. The exact scope of the delivery and the number of individual components depends on your order.



- 1 Base rails
- 2 Connector (with grounding)
- 3 Connector for CSS rail
- 4 End caps
- 5 Solar fastener
- 6 Laminate middle clamp
- 7 Laminate end clamp
- 8 Cross rail connector
- 9 Roof hooks
- 10 Inter-module clamp
(optional with bonding clip)
- 11 Universal end clamp
- 12 Standing seam clamp
- 13 Kalzip clamp steel
- 14 S-5 mini-clamp
- 15 Wood screws 8x80mm / 6x80mm / 6x100mm
- 16 T-head bolt
- 17 Small parts (required for some roof hooks,
hanger bolts and sheet-metal clamps)
- 18 L-brackets

3. Important Installation Information

3.1 Conditions of Use

The Pitched ProLine on-roof system is designed with different rail and on-roof fastener variations in accordance with Eurocode 1-DIN EN 1991-1-1 for various maximum loads. The suitability of the material must therefore be verified for each system, e.g. by means of the Pitched ProLine configuration tool. Please also observe the constraints, listed in chapter 2.3 "Technical Data".



DANGER!

Risk of fatal injury from damage to roof

Excessive loads can severely damage the roof.

Before mounting and installation, please make sure that the building and especially the roof cladding meets the increased structural requirements for the PV system



DANGER!

Risk of fatal injury from falling objects

Parts falling from the roof can result in serious injuries or death.

Before commencing with the installation, please ensure that the material used meets the structural requirements of the site.

Mounting Systems GmbH recommends you inquire about the local conditions before ordering the Pitched ProLine. In particular, acquaint yourself with:

- The roof structure,
- Dimensions, material, quality and distance of the rafter purlins

- the rafter purlins distance with any irregularities
- Type, quality and fastening method of the roof tiles/roofing

3.3 Mounting Aids and Required Tools

For the installation of the mounting system, you will require the following tools:

- Allen key/hexagon socket drill bit, 5 mm and 6 mm
- Socket key/socket key attachment size 13 and size 16
- Cordless screwdriver/electric drill with attachment for fastening the wood screws; varying depending on the roof hooks selected:
 - Cross recess (for chipboard screws) AW 30 (for 6x80 wood screws)
 - Socket key attachment size 13 (for 8x80 wood screws)
 - Socket key attachment size 9 (for M12x300 hanger bolts)
 - Socket key attachment size 7 (for M10x200 hanger bolts)
 - Angle grinder with:
 - Metal cutting disc
 - Stone disc
- Chalk Line
- Spirit level
- Yard stick/tape measure

3.4 About the Installation Instructions

In the following chapters all steps for the planning and mounting of the Pitched ProLine are listed in the correct sequence. Chapters 5, 6, 7 and 8 describe the mounting steps of the modules, chapters 9–11 describe the mounting steps for other material and installation variations.

Please adhere to the mounting steps listed and be ensure to follow the safety instructions.

4. Planning the Module Area

For installation, the base rails are fastened to the rafters or purlins (for metal roofs) of the building with roof fasteners (e.g. roof hooks). The roof fasteners must be mounted at defined distances, depending on the distance of the rafters/purlins, the position on the roof and on the on-site conditions*. The layout is defined using a configuration tool or project-related structural analyses.

* Layout required according to local conditions in accordance with Eurocode 1-DIN EN 1991-1-1/ Eurocode 9-DIN EN 1999-1-1.



DANGER!

Risk of fatal injury from damage to roof

Excessive loads can severely damage the roof.

Before mounting and installation, please make sure that the building and especially the roof construction meets the increased structural requirements resulting from the PV system and the assembly operation.

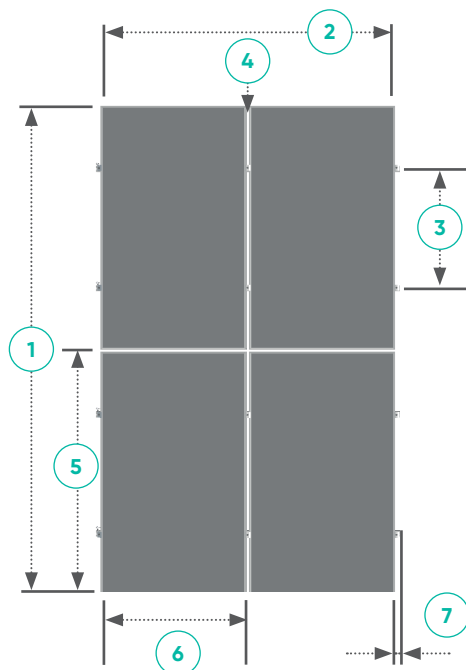


DANGER!

Risk of fatal injury from falling objects

Parts falling from the roof can result in serious injuries or death.

Before any mounting or installation, please make sure that the material used is suitable for the building structure and meets the structural requirements applicable on-site.



- 1 Height of the module field:
 $nMV \times ML + (\text{Total gap dimension, if needed})$
 - 2 Width of the module field:
 $nMH \times (MW + 19 \text{ mm}) + 2 \times 41 \text{ mm} - 19 \text{ mm}$
- nMV** Number of modules vertical
nMH Number of modules horizontal
- 3 Distance of the base rail vertically (according to the clamping points defined by the module manufacturer) approx. quarter points of the modules = $1/2 \times \text{module length}$
 - 4 Distance between the modules = 17–19 mm
 - 5 Module length (ML)
 - 6 Module width (MW)
 - 7 41 mm overlap of the rail for fastening the end clamps

Design according to local conditions in accordance with Eurocode 1-DIN EN 1991-1-1/ Eurocode 9-DIN EN 1999-1-1 required



DANGER!

Risk of fatal injury due to falling

Falling from the roof can result in serious injuries or death.

Please wear the statutory protective equipment.

Secure yourself against falling.

Do not perform any work in strong winds.



DANGER!

Risk of fatal injury from falling objects

Parts falling from the roof can result in serious injuries or death.

Block off the hazard area on the ground prior to the mounting work to prevent falling objects injuring persons.

Ensure that no parts can fall off the roof.

Please wear the statutory protective equipment.

Do not stay in the hazard area.

Do not perform any work in strong winds.

After completion of the installation, check the racking system and the modules for a tight fit.

5. Installation of Roof Fasteners

The roof fasteners are fixed to the roof structure and serve as a connector to the base rails. The permissible distance between the roof fasteners depends on the structural requirements and must be laid out specifically for the project, e.g. with the Pitched ProLine configuration tool. The type of roof fastener must be selected according to the respective structural load, substructure and roof cladding. Depending on the roof construction and the type of roof fastener, the installation process or the preparation of the substructure can vary or require additional structural measures. If you have any doubts, please contact a specialist roofer. In the following, the installation of a standard roof hook is described. The mounting steps for other types of roof fasteners are described in chapter 8.

5.1. Preparation of the Roof Substructure

Mounting steps

- Determine the position of the base rails and the roof fasteners on the roof, taking into account the system planning, the tile and rafter pattern and the permissible clamping points of the PV modules used.
- Push up or remove the roof tiles at the appropriate points.



CAUTION!

Damage to the building and the PV system due to incorrect mounting

Incorrect distance between the roof fasteners can cause damage to the building and the PV system.

Select the distance of the roof fasteners according to the tool layout and adhere to it.

Adhere to the potentially different distance values defined for roof fasteners to be placed in the middle of the roof or along the edge / in the corners of the roof.

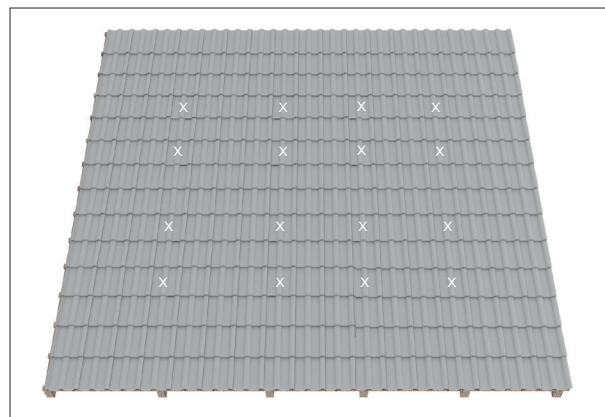


Image 5.1-1

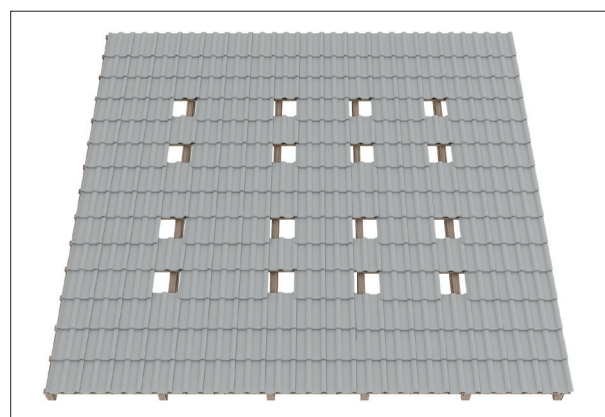


Image 5.1-2

- Prepare the fastening points of the substructure for professional mounting of the roof fasteners and ensure sufficiently load-bearing, wide and level contact surface.

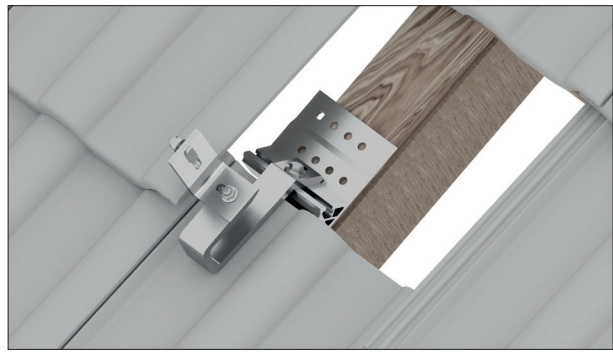


Image 5.1-3



Image 5.1-4



Image 5.1-5



Image 5.1-6



CAUTION!

Damage to the building and the PV system due to incorrect mounting

Incorrectly installed roof hooks can break away.

Fasten each roof hook to the substructure with the stipulated number of screws.

Please pre-drill the holes for the wood screws.

Adhere to the permissible edge distances when positioning the screws. If necessary, structurally widen the substructure.



NOTE!

Depending on the roof structure, type of roof fastener and structural requirements, various additional structural measures might be required at the fastening points. For example, in a counter-batten construction, the contact surface might need to be expanded by additional squared timber screwed to the rafters. With a frame structure, the roof trusses might need to be doubled up at the appropriate positions.

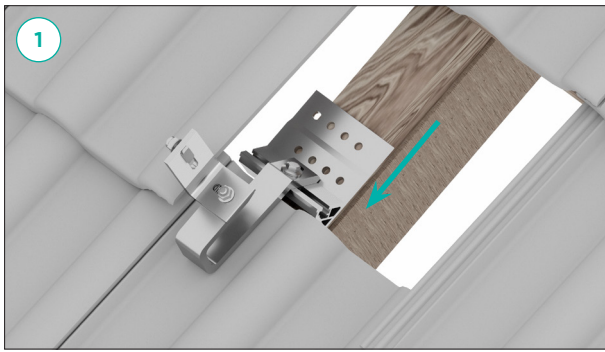


Image 5.2-1

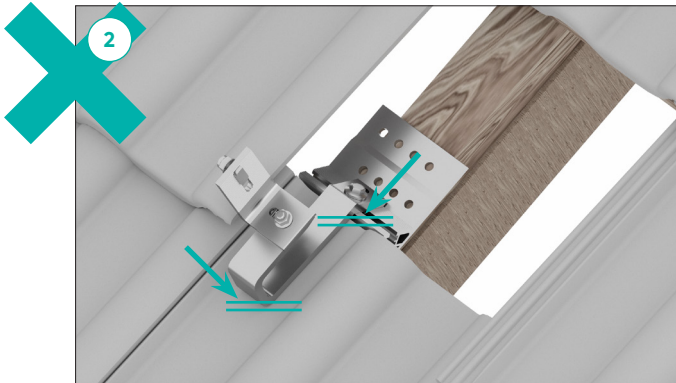


Image 5.2-2

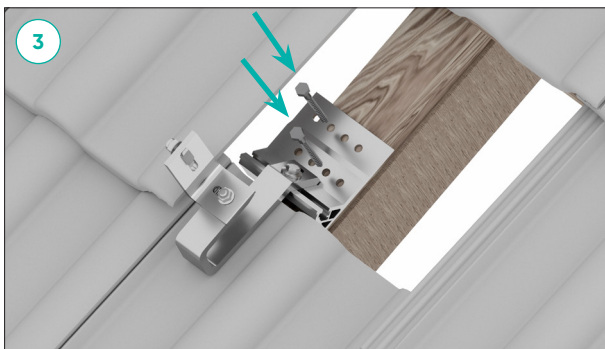


Image 5.2-3

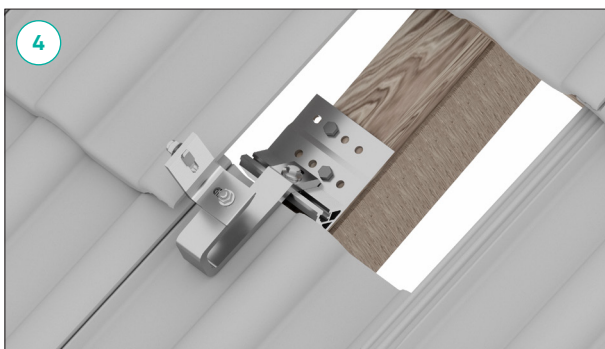
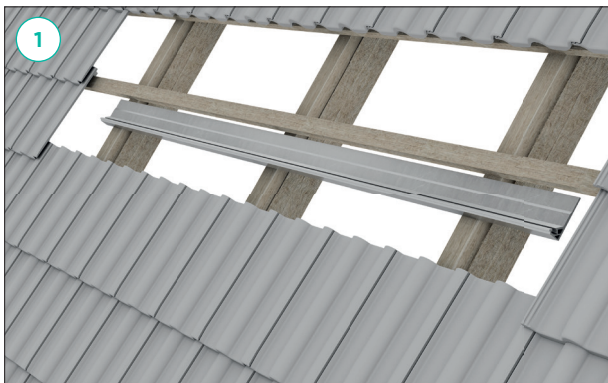


Image 5.2-4

5.2. Placing the Roof Fasteners Here: Standard Roof Hook

Mounting steps

- 1 Position the roof hook and, if required, underlay it; neither the vertical nor the horizontal stay of the roof hook may touch the underlying roof tile.
- 2 Align the roof hook.
- 3 Fasten the roof hook with 2 wood screws 6x80 to thereafter. Observe the permissible edge distance for wood drilling.
- 4 Please pre-drill the hole for the wood screws.



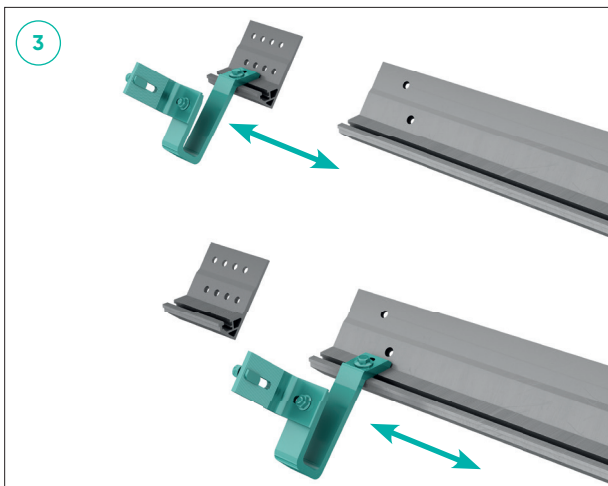
5.2.2 Placing the Roof Fasteners - With the Adapter 3

The Adapter 3 (referred to as „Adapter“ hereafter) is employed in situations where installers face obstacles, encounter uneven spacing between rafters, or find that the tile overlaps with the hook, thus obstructing the required mounting area.

Mounting steps



- 1 Remove tiles to access rafters and position adapter.
- 2 Use adapter data sheet gauge to mark drilling points where Adapter intersects with rafters.



- 3 Disassemble roof hook, slide into Adapter, align properly, and torque-lock (20 Nm) nut.



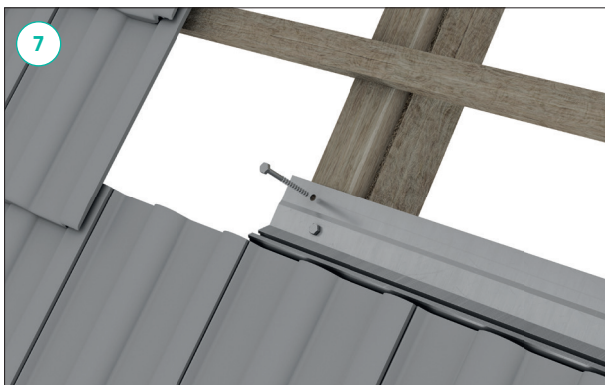
- 4 Apply appropriate torque (20 Nm) to securely fasten the locking nut on the hook.



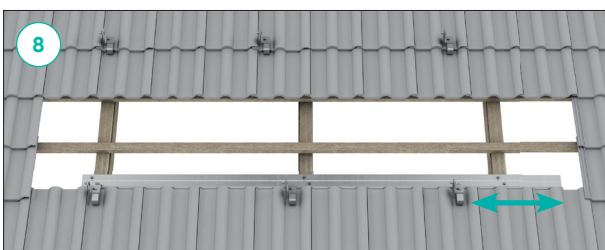
5 Drill holes with 6 mm head in the rafter before installation.



6 Drill adapter holes with 9 mm head before installation.



7 Position Adapter and secure it with 2 Hexagon 8 x 80 mm flat head screws.



8 Cantilever max 400mm



9 Optionally, trim excess length from Adapter.

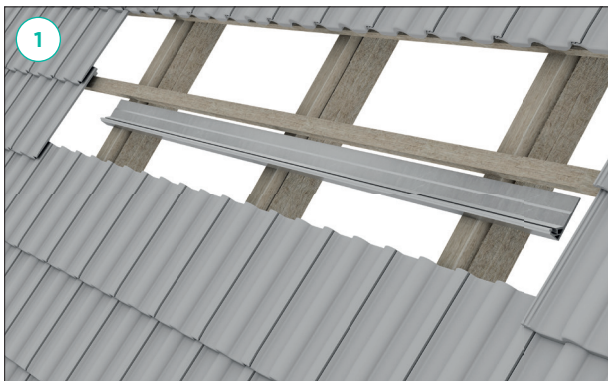


CAUTION!

Ensure the Adapter makes contact and is mechanically fixed with a minimum of 2 rafters.

The cantilever of the Adapter from Rafter, must not exceed 400 mm.

If the rafter distance exceeds 700 mm, the hook must not be centered; it must be within 350 mm of either rafter.



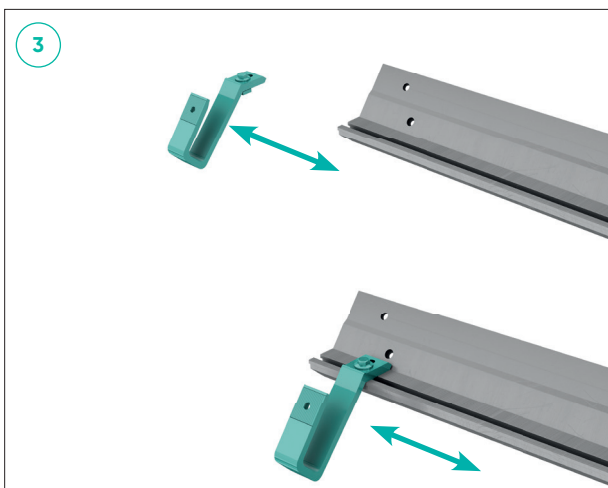
5.2.2 Placing the Roof Fasteners - With the Adapter 3

The Adapter 3 (referred to as „Adapter“ hereafter) is employed in situations where installers face obstacles, encounter uneven spacing between rafters, or find that the tile overlaps with the hook, thus obstructing the required mounting area.

Mounting steps



- 1 Remove tiles to access rafters and position adapter.
- 2 Use adapter data sheet gauge to mark drilling points where Adapter intersects with rafters.



- 3 Disassemble roof hook, slide into Adapter, align properly, and torque-lock (20 Nm) nut.



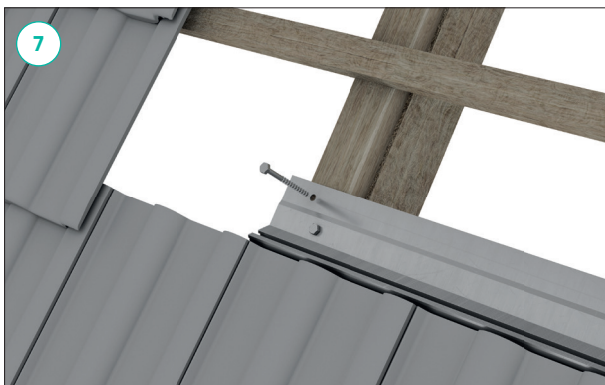
- 4 Apply appropriate torque (20 Nm) to securely fasten the locking nut on the hook.



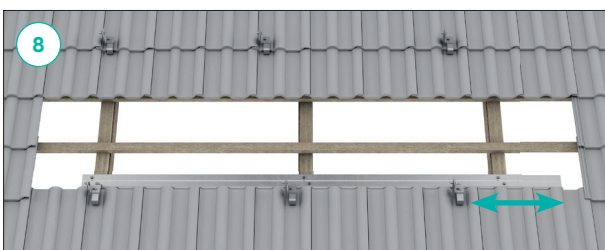
5 Drill holes with 6 mm head in the rafter before installation.



6 Drill adapter holes with 9 mm head before installation.



7 Position Adapter and secure it with 2 Hexagon 8 x 80 mm flat head screws.



8 Cantilever max 400mm



9 Optionally, trim excess length from Adapter.



CAUTION!

Ensure the Adapter makes contact and is mechanically fixed with a minimum of 2 rafters.

The cantilever of the Adapter from Rafter, must not exceed 400 mm.

If the rafter distance exceeds 700 mm, the hook must not be centered; it must be within 350 mm of either rafter.

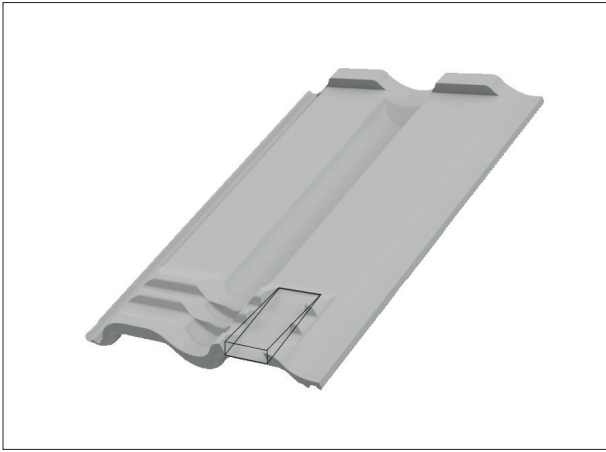


Image 5.3-1

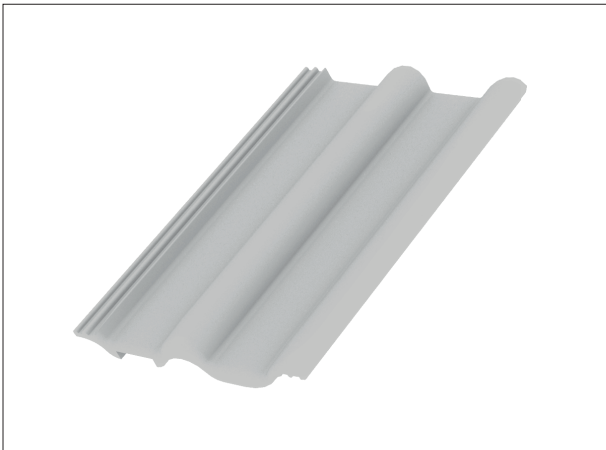


Image 5.3-2



Image 5.3-3

5.3. Placing the Roof Tiles

Mounting steps

- Correctly process the underside of the removed roof tiles to ensure that the roof tile can be replaced cleanly and does not stand up due to the underlying roof hook
- Reinstall the roof tiles.
- If required, take additional structural measures to restore rain proofing.



CAUTION!

Damage to building from leaking

Incorrectly installed roof hooks and incorrectly performed restoration of the rain proofing of the roof cladding can result in leakages.

Prior to installation, make sure to choose a roof fastener variant that is suitable for the roof and its requirements.

Do not install unsuitable roof fasteners.

When mounting the roof fastener adhere precisely to the mounting instructions.

Make sure to perform cut-outs on the tile or any additional structural measures that might be required in a professional manner. If you have any doubts please contact a specialist roofing company.

6. Installing the Base Rails

The base rails serve as module support and are available in different strengths and lengths.

6.1. Placing and Alignment of the Base Rails

Mounting steps

- Pre-mount the T-head bolt and serrated lock nut to the roof hook.
- Lay out the total rail length per rail track (see chapter 4) and perform any rail cut-outs that might be necessary.
- Distribute the base rails on the roof.

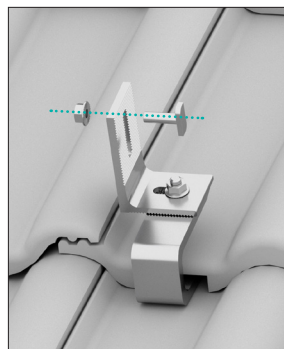


Image 6.1-1

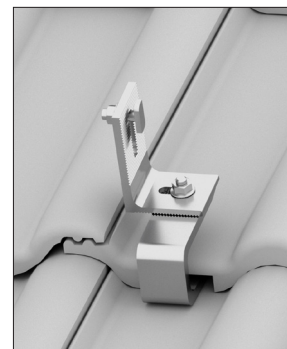


Image 6.1-2

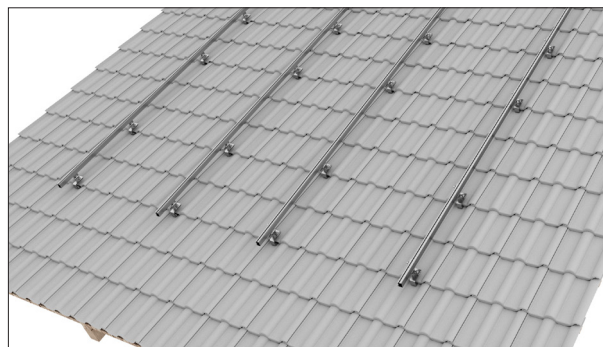


Image 6.1-3 Vertical rail installation

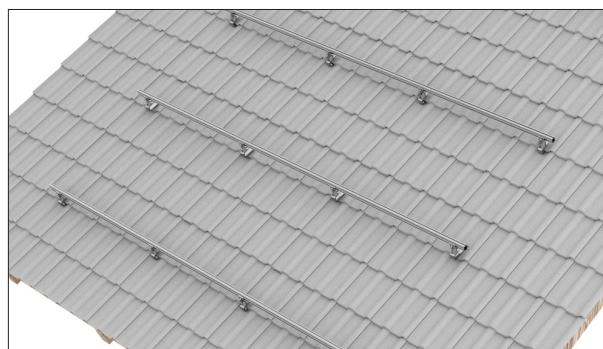


Image 6.1-4 Horizontal rail installation



NOTE!

The permitted cantilever (overhanging of the loose rail ends over the last roof fastener) is limited to 30 cm. Do not exceed this limit.



NOTE!

Do not fasten all the base rails at once, but alternate between installation steps 6.1. and 6.2. Install the individual base rails plugged together with a connector.

- Hold the rail against the roof hook, insert the T-head bolt in the side channel, loosely fasten the screw with a quarter-turn in the side channel of the base rail, and loosely tighten the nut.



CAUTION!

Material damage due to incorrect mounting

Incorrectly mounted T-head bolts can slip out.

When inserting the T-head bolts, always ensure the correct, vertical fit of the bolt head in the channel.

When aligning the rails and during the final fastening of the T-head bolts, make sure that the head of the bolt does not slip into an incorrect position.

Adhere to the specified torque of 20 Nm.

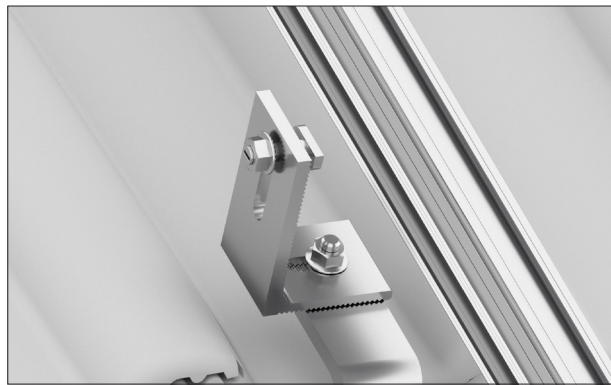


Image 6.1-4

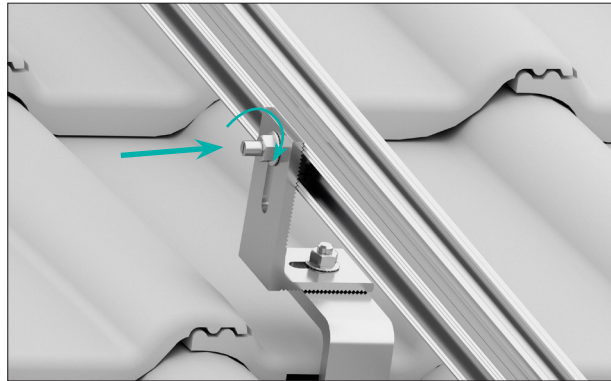


Image 6.1-5

- Align the base rails by using a chalk line or spirit level.

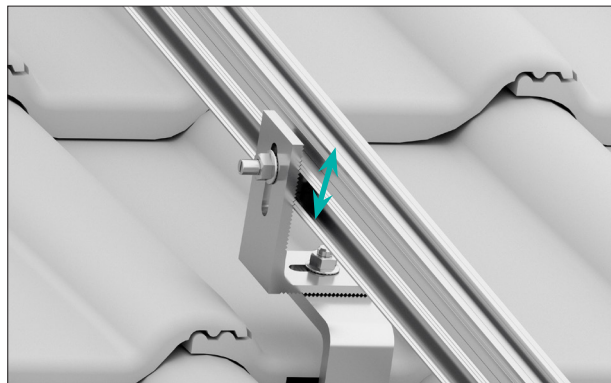


Image 6.1-6

- Tighten the lock nuts - torque: 20 Nm. Make sure the T-head bolts are positioned correctly in the rail channel.

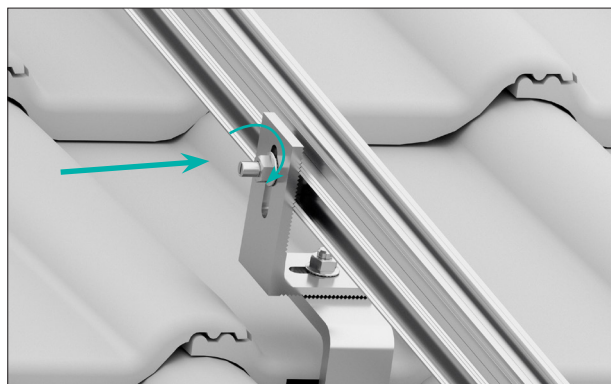


Image 6.1-7

6.2. Connection of the Base Rails

Rail connectors are provided for the linking of the individual base rails. There are two different versions of connectors available for each rail thickness; an interior connector and an exterior connector.

Mounting steps - interior connector

- Insert the rail connector into the first base rail until the stop.
- Slide the next base rail onto the placed rail connector until the stop.



Image 6.2 - 1

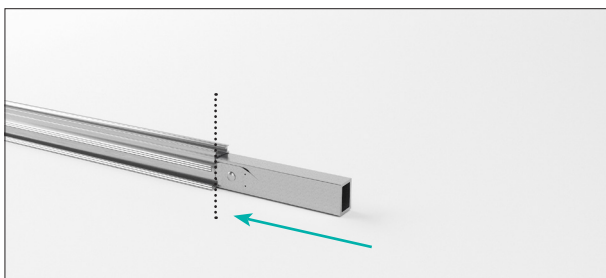


Image 6.2 - 2

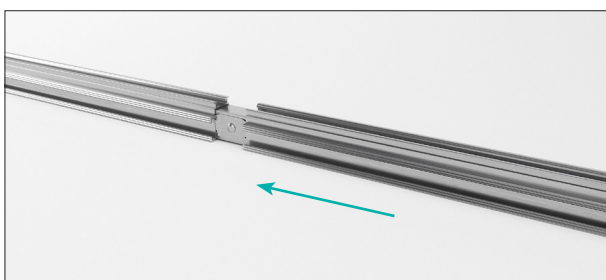


Image 6.2 - 3



NOTE!

Connected rails should not exceed a length of 12 m. Thereafter, an expansion joint (approx. 5 cm) must be considered. Do not install modules over expansion joints. The total rail length required depends on the width of the module field.

Mounting steps - exterior connector

- Slide the connector halfway into the side channel on the back of the base rail.
- Push the second base rail to the stop on the connector.
- Tighten both bolts manually, thus completing the connection. (torque 20 Nm).

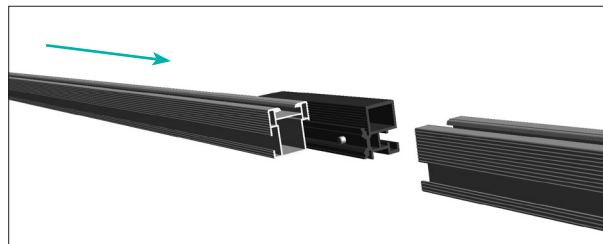


Image 6.2. - 4

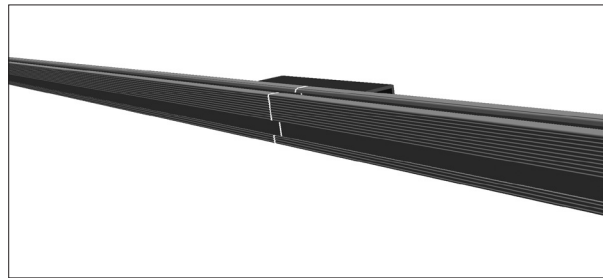


Image 6.2. - 5

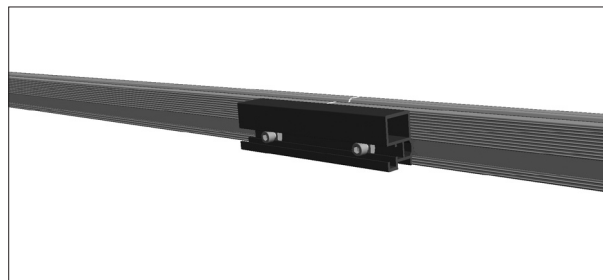


Image 6.2. - 6



NOTE!

For this connection type, the base rails can be pre-assembled on the ground. This may facilitate transport onto and placing on the roof.

6.3. Placing the End Caps

The end caps are optional components and only have an optical function.

Mounting steps

- From the outside, push the end caps onto the ends of the base rails.

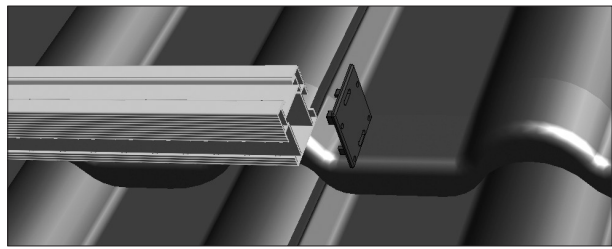


Image 6.3. - 1

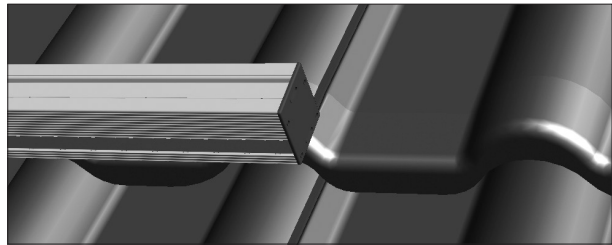


Image 6.3. - 2



Image 6.3 - 3



Image 6.3 - 4

7. Installing of Clickstones

Clickstones are used for the fastening of the modules. The Clickstone is a special clip with which the module clamps are fastened in the base rail. You only need an Allen key (5 mm) for the installation. You can insert the Clickstone from above into the top channel of the base rail.

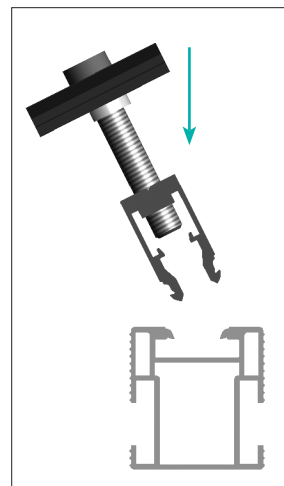
Mounting steps

- Insert the Clickstone at a slight angle into the rail channel.
- Push the Clickstone down. Make sure you hear the Clickstone clicking into the base rail.
- Tighten the bolt with a torque of 8 Nm.

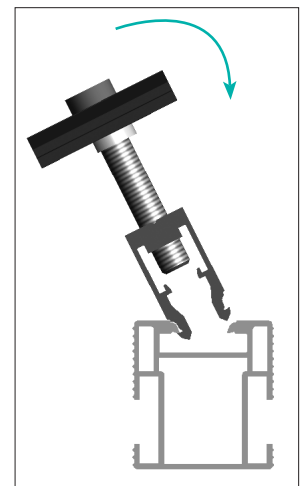


NOTE!

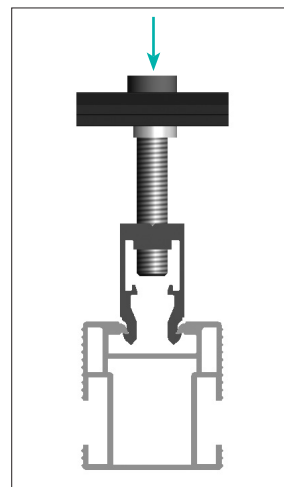
The shape of the Clickstone corresponds exactly to the profile of the rail channel. It has been consciously constructed not to run easily in order to prevent unintentional slipping in vertical rail tracks. To move the Clickstone, press lightly on the bolt, from above, and move the stone with a little pressure along the rail channel.



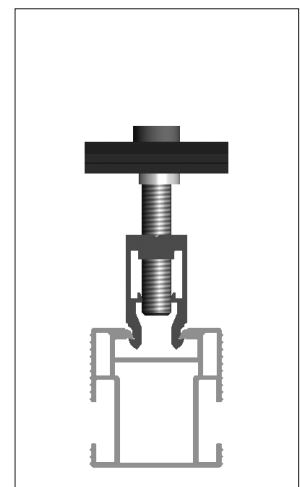
1



2



3



4

Image 7-1 Mounting steps



NOTE!

The lugs on the inside of the Clickstones are designed in such a way that once the bolt has been tightened, they prevent a "click out" mechanically. Accordingly, the bolt must first be unscrewed to above the lugs before the Clickstone can be removed from the base rail by pressing the sides of the stone together and lifting.



CAUTION!

Material damage due to incorrect installation

Incorrectly mouted Clickstones can slip out. PV modules can fall and be damaged.

Mount all Clickstone connections in accordance with the instructions.



CAUTION!

Material damage caused by deformed Clickstones

If clearly deformed Clickstones are used, the safety of the module fastening is not guaranteed. PV modules can fall and be damaged.

Only use Clickstones where the lugs are parallel to each other and you can clearly hear them clicking into the rail channel.

Replace deformed Clickstones prior to installation.

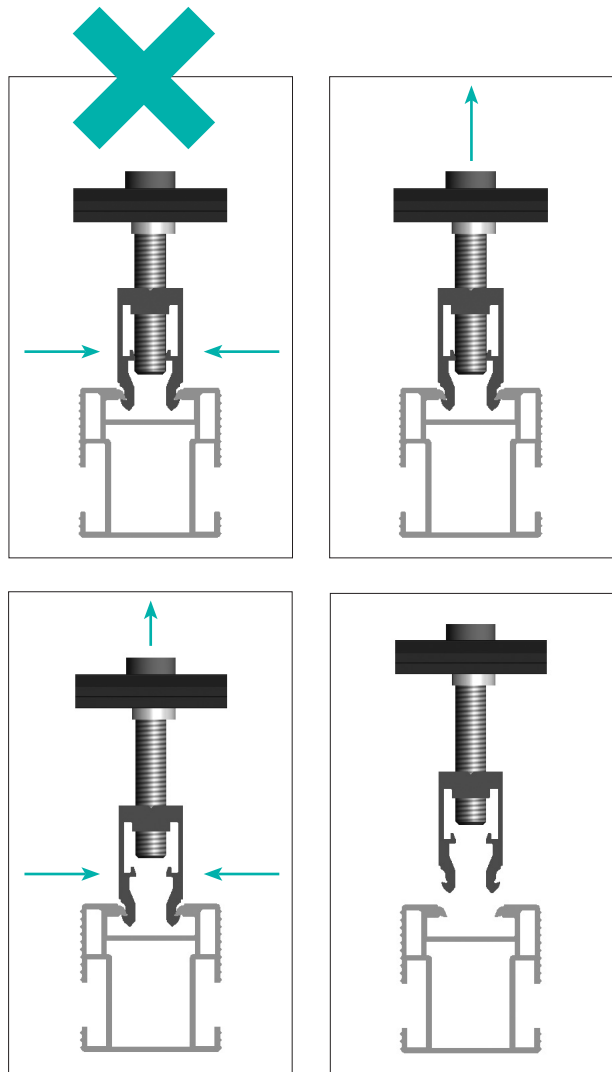


Image 7-2 Demounting steps

8. Module Installation

The modules are installed on the base rails one by one. Mounting Systems GmbH recommends mounting the modules starting from one side. Module clamps and module end clamps are used for the fastening of the modules. The module end clamps can hold one module each. The module clamps are positioned between two modules.

8.1. Fastening the Modules on the Outer Side

The margin modules of the PV system are on the left and right side at a portrait installation and on the up and down side at a landscape installation. These modules are fastened on the outer side with two module end clamps each.



NOTE!

Please adhere to the module-clamp standards of the module manufacturer. Basically, the modules are clamped at the quarter points.

Mounting steps – Portrait Installation

- Place and align an outside module. The base rail must protrude the module frame by 41 mm.
- Insert the Clickstone of the module end clamp into the channel of the base rail.
- Push the module end clamp right to the module frame (max. permissible gap 1 mm)
- Tighten the bolt (torque 8 Nm) and thus clamp the module.

Mounting steps – Landscape Installation

- Insert the Clickstone of the module end clamp into the channel of the base rail.
- Place and align the module.
- Push the module end clamp right to the module frame (max. permissible gap 1 mm).
- Tighten the bolt (torque 8 Nm) and thus clamp the module.

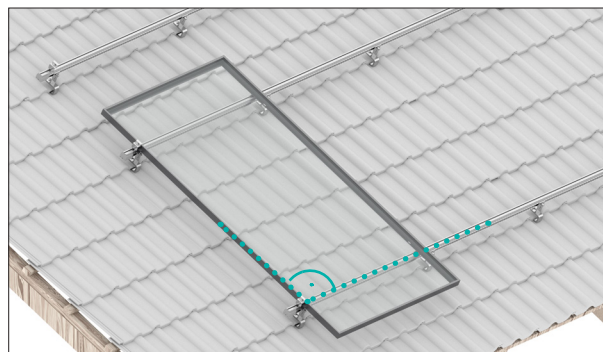


Image 8.1-1

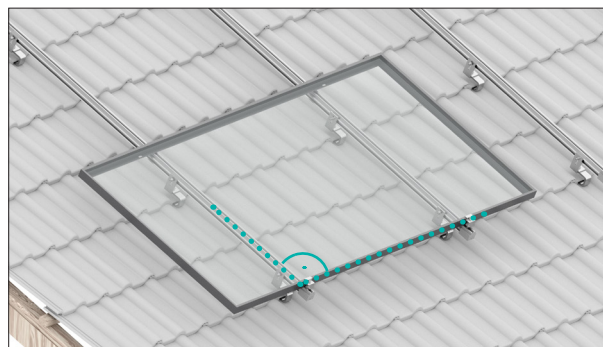


Image 8.1-2



Image 8.1-3

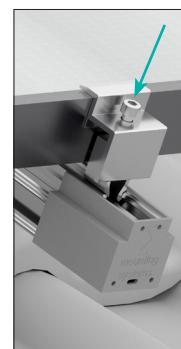


Image 8.1-4



Image 8.1-5



CAUTION!

Material damage due to incorrect mounting

Incorrectly fastened modules can fall and become damaged.

Make sure the Clickstones click in correctly.

Push the module end clamp all the way to the module.

Adhere to the stipulated torque of 8 Nm when tightening the bolt.

Check the module fits tightly after mounting.

8.2. Fastening the Modules on the Inner Side

Two middle module clamps are fastened between two modules.

Mounting steps

- Insert the Clickstone of the module clamp into the channel of the base rail.
- Push the module clamp all the way to the frame of the already mounted module.
- Push the second module to the module clamp (max. permissible gap between two modules: 19mm) and align.
- Tighten the bolt (torque 8 Nm) and thus clamp the modules.

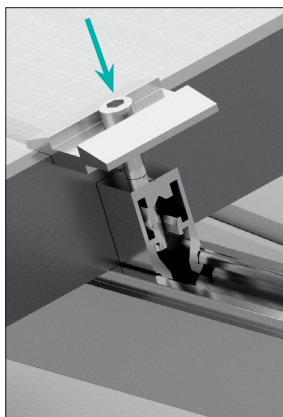


Image 8.2-1

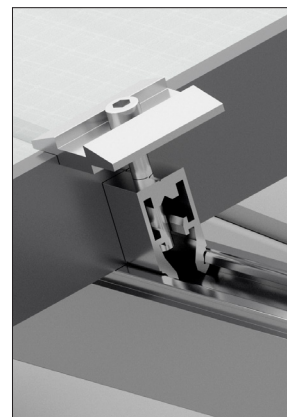


Image 8.2-2

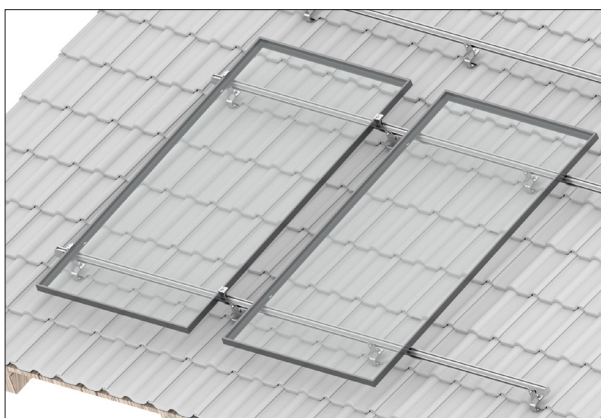


Image 8.2-3 Portrait installation

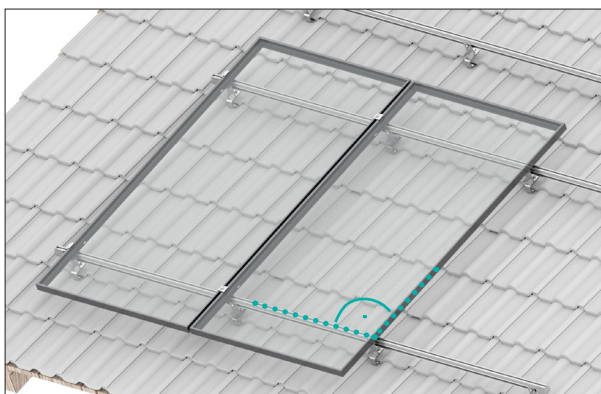


Image 8.2-4 Portrait installation

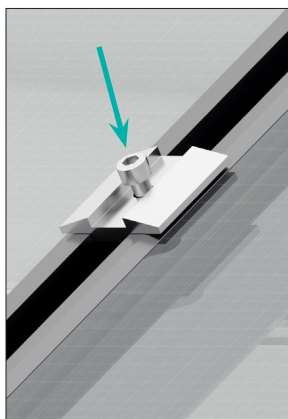


Image 8.2-5

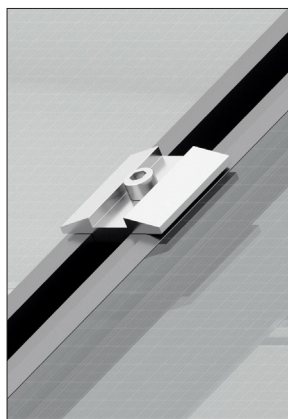


Image 8.2-6

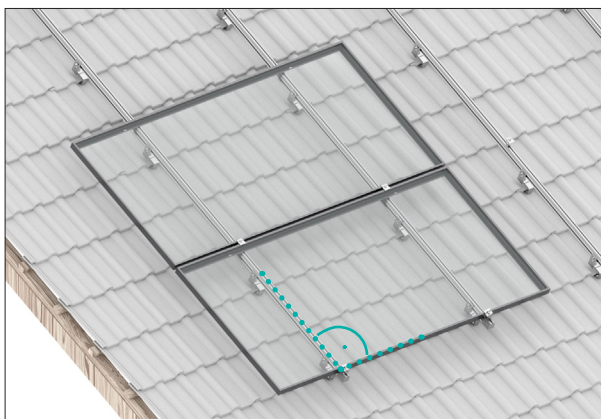


Image 8.2-7 Landscape installation



CAUTION!

Material damage due to incorrect mounting

Incorrectly fastened modules can fall and become damaged.

Make sure the Clickstones click in correctly.

Push the modules all the way to the module clamp.

Adhere to the stipulated torque of 8 Nm when tightening the bolt.

Check both modules fit tightly after mounting.

8.3. Fastening Additional Module Rows

Mounting steps - Portrait Installation

- Push the modules in the upper rows from above down to the modules in the lower rows. For optical reasons you can also keep a distance to the lower module.
- Fasten the modules analogously to the 1st row with module end clamps and module clamps (cf. chapters 8.1 and 8.2).

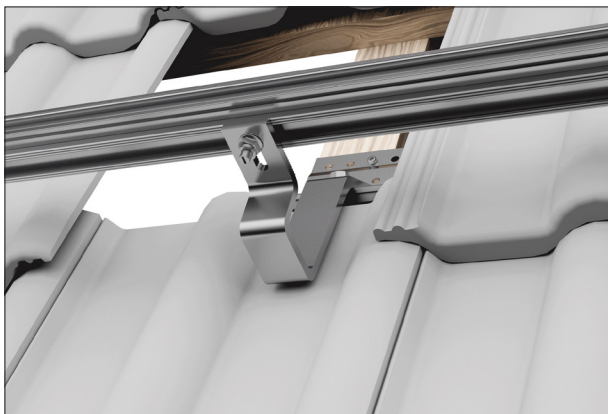


Image 8.3-2 Horizontal rail adjustment with roof hook Alu 100-7-45 complete



NOTE!

Use e.g. a module clamp as a spacer gauge. This way you will achieve identical horizontal and vertical distances between modules.

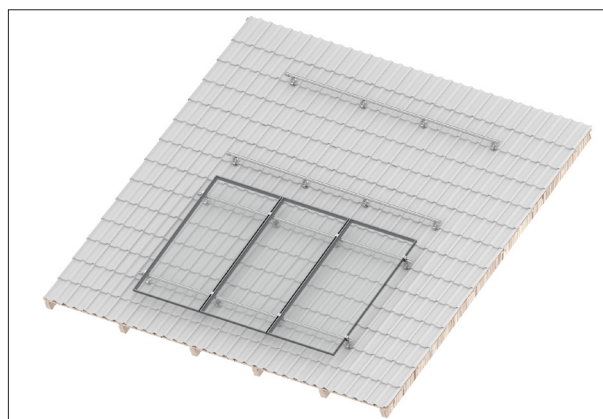


Image 8.3-1

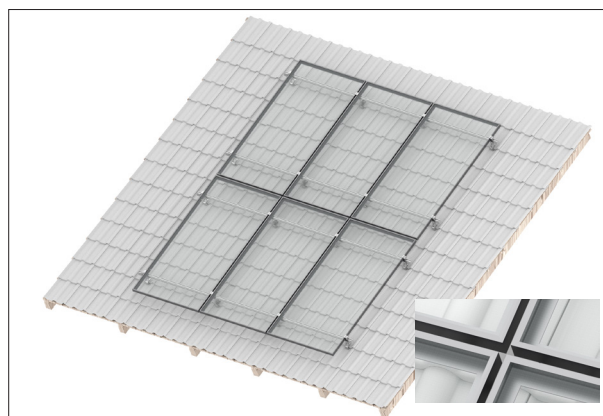


Image 8.3-3

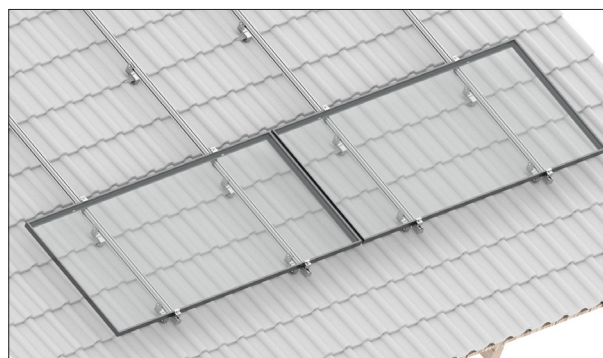


Image 8.3-4

Mounting steps - Landscape Installation

- Push the modules on the side to the mounted modules. For optical reasons you can also keep a distance to the lower module.
- Fasten the modules analogously to the 1st row with module end clamps and module clamps (cf. chapters 8.1 and 8.2).



Image 8.3-5

9. Installing Additional Roof Fastener – Variants

9.1. Installation of the Heavy Load Roof Hooks

The heavy load roof hook is designed for increased snow loads and therefore has a slightly different shape and is made from thicker material. Adjustment of the roof tiles or additional structural measures for the restoration of the rain-proofing is therefore more likely to be necessary than for the standard roof hook.

Mounting steps

- Position the roof hook and, if required, underlay it; neither the vertical nor the horizontal stay of the roof hook may touch the underlying tile.
- Align the roof hook.
- Pre-drill with a diameter of 5 mm at the 2 fastening points. Observe the permissible edge distance for wood drilling.
- Fasten the roof hooks to the rafters with 2 wood screws 8x80 and 2 washers.



CAUTION!

Damage to the building and the PV system due to incorrect installation

Incorrectly installed roof hooks can break away.

Fasten each roof hook to the substructure with the stipulated number of screws.

Adhere to standard edge distance when positioning the screws. If necessary, structurally widen the substructure.

Pre-drill holes.

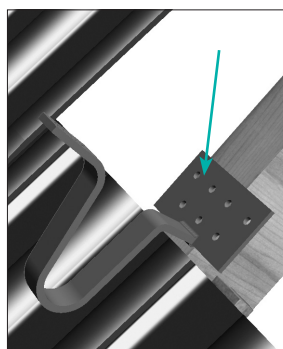


Image 9.1.-1

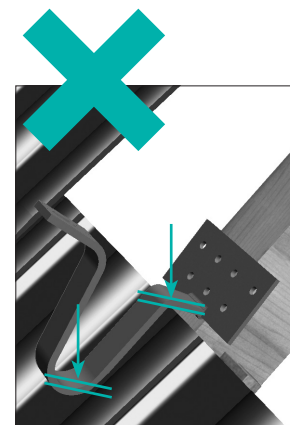


Image 9.1.-2

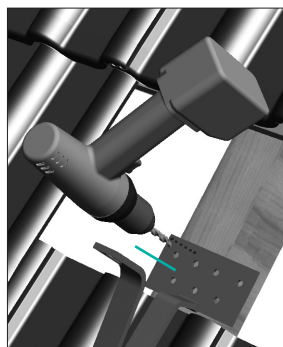


Image 9.1.-3

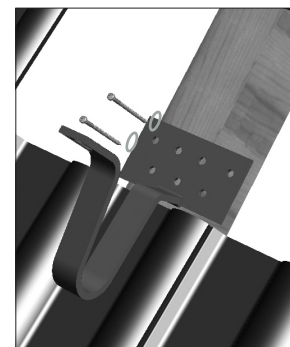


Image 9.1.-4

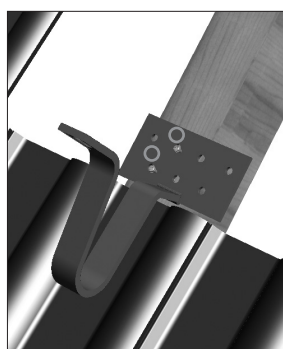


Image 9.1.-5

9.2. Installing Adjustable Roof Hooks

Adjustable roof hooks allow for more mounting flexibility and are thus suitable for a larger range of roof tiles and batten strengths than standard roof hooks. The necessity of underlying the roof hooks is less likely. Please ensure safe blocking of the adjusting points.

Mounting steps

- Position the roof hook and select the stay height. Position in such a way that neither the vertical nor the horizontal stay of the roof hook touches the underlying roof tile.
- Tighten the connecting bolt at the adjusting point (torque of 20 Nm).
- Align roof hook.
- Fasten the roof hooks to the rafters with 2 wood screws 6x80. Observe the permissible edge distance for wood drilling. Please pre-drill the holes for the wood screws.



CAUTION!

Damage to the building and the PV system due to incorrect installation

Incorrectly installed roof hooks can break away.

Fasten each roof hook to the substructure with the stipulated number of screws.

Adhere to standard edge distance when positioning the screws.

If necessary, structurally widen the substructure.

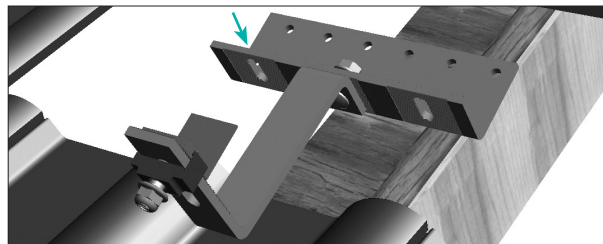


Image 9.2.-1

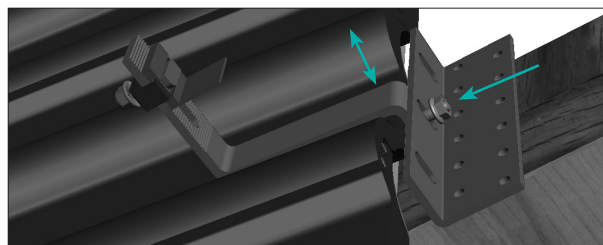


Image 9.2.-2

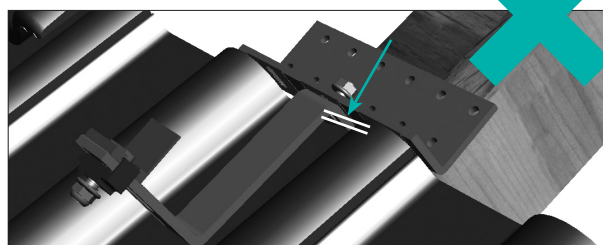


Image 9.2.-3

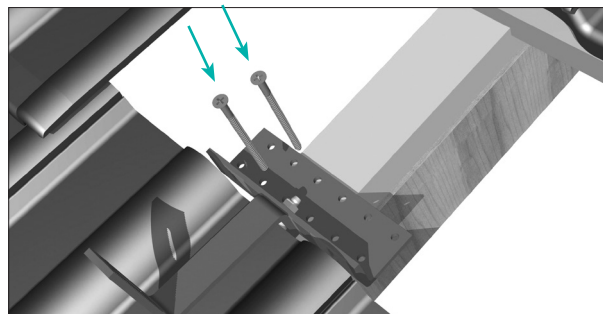


Image 9.2.-4

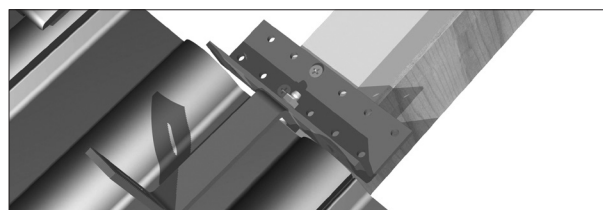


Image 9.2.-5

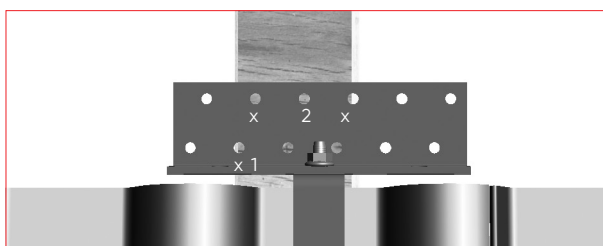


Image 9.2.-6

9.3. Installation of Plain Tile and Slate Roof Hooks

Unlike other tile roofing, for plain tile or slate roofs the roof tiles / slates above the roof hooks need to be completely cut out as the material is often too thin for a partial cut-out on the underside. In this case, appropriate additional structural measures need to be carried out in order to ensure the restoration of the rain-proofing of the roof.



CAUTION!

Damage to building from leaking

Incorrectly performed additional structural measures can lead to leaks.

When installing the flat tile or slate roof hooks adhere precisely to the mounting instructions.

Use appropriate shims adhering to the national and local roofing regulations.

Make sure to perform cut-outs on the roof tile or any additional structural measures that might be required in accordance with the national and local roofing regulations. If you have any doubts please contact a specialist roofing company.

Mounting steps

- Loosely fasten the supplied L-bracket with bolt, washer, lock washer and nut to the roof hook.
- Apply water drips to a shim made from a suitable material (e.g. aluminium or titanium zinc) - width of the shim for flat tile at least 10 cm, for slate at least 20 cm.

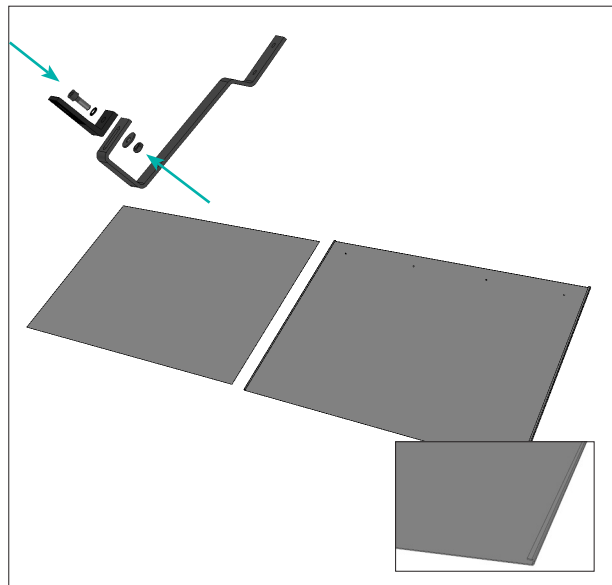


Image 9.3.-1

- Place the shim and roof hook together at the fastening point and align.
- Fasten flat-tile roof hooks to the substructure with 2 wood screws 6x80, slate roof hooks with 3 chipboard screws 6x100, drilling through the shim. Observe the permissible edge distance for wood drilling.
- Work the flat tiles/slates of the next row towards the roof hook, i.e. by notching or cutting.
- Lay the flat tiles/slates of the following row as normal.
- Align the loosely pre-mounted L-brackets in one row and tighten finally (torque of 20 Nm).

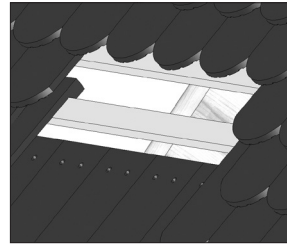


Image 9.3.-2

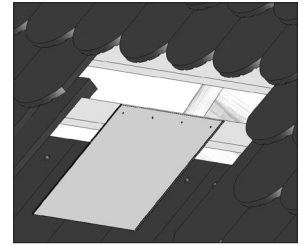


Image 9.3.-3

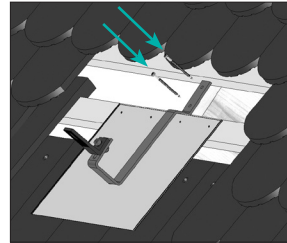


Image 9.3.-4

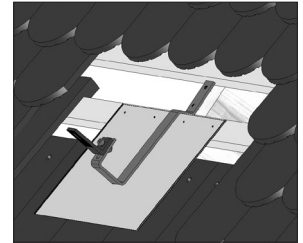


Image 9.3.-5

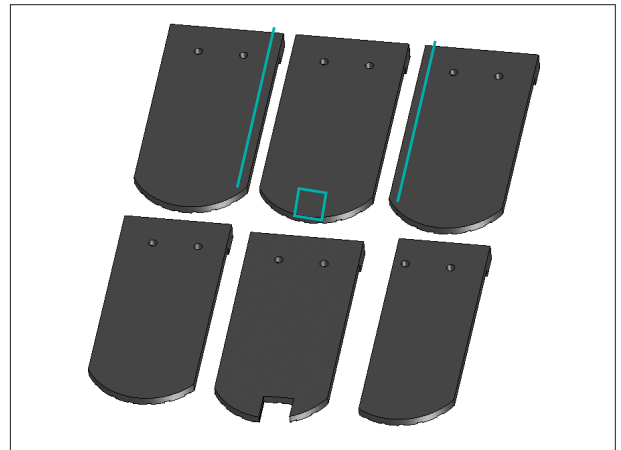


Image 9.3.-6

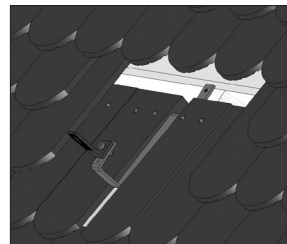


Image 9.3.-7

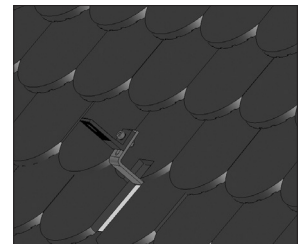


Image 9.3.-8

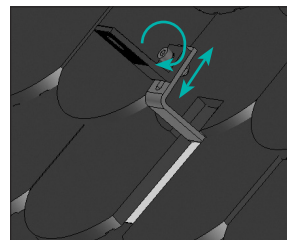


Image 9.3.-9

9.4. Installing Hanger bolts

Hanger bolts can be used as roof fasteners on tin or cement fiber roofs. These roof types have different sealing methods (rubber seal or caps) and different threading types on the lower part of the bolt (for wood or metal purlins). The correct fit of the seals is crucial to a correct installation.

Additionally, tin roofs or cement fiber roofs usually have a purlin substructure. This means that the base rails run vertically instead of horizontally, in contrast to the tile roofs mentioned above. Therefore, landscape orientation of the modules is the preferred type of installation; otherwise the mounting steps for the rail and module fastening remain identical.

Mounting steps

- Pre-drill holes for the hanger bolts. Always make sure that the hanger bolts sit on the high beads. Also observe the permissible edge distance when drilling into the substructure
- Insert screw.
- Sufficiently tighten the sealing or cap with the nut, without damaging or deforming the roof cladding.
- Mount the supplied L-brackets on the hanger bolts. Position all brackets at one height, e.g. by using a chalk line.



CAUTION!

Damage to building from leaking

Incorrectly positioned hanger bolts can lead to leaks.

Always place hanger bolts on the high beads, never in the low beads.

Ensure a clean fit and sufficient contact pressure of the rubber seal or cap.

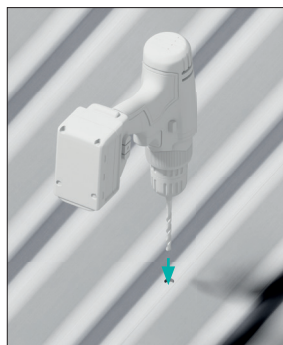


Image 9.4-1

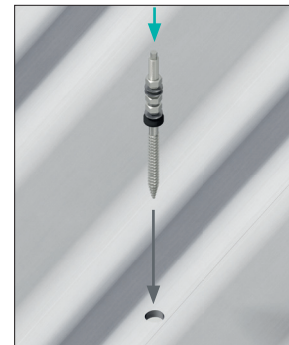


Image 9.4-2

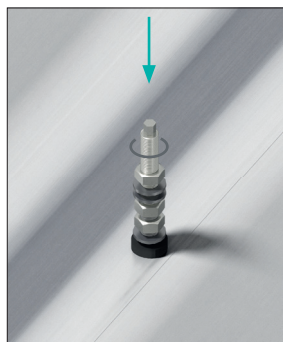


Image 9.4-3

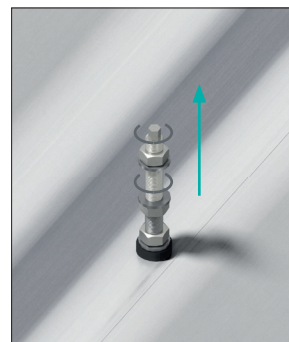


Image 9.4-4

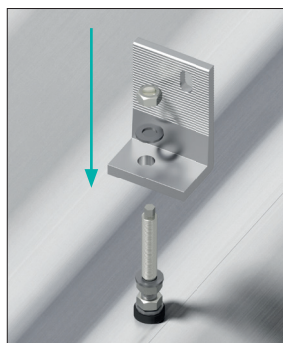


Image 9.4-5

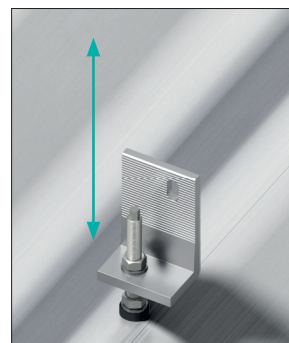


Image 9.4-6



CAUTION!

Damage to the building and the PV system due to incorrect installation

Incorrectly mounted hanger bolts can pull out.

Pre-drill holes for the hanger bolts.

Make sure to observe the permissible edge distance for drill holes in wood/metal when fastening in the purlin.

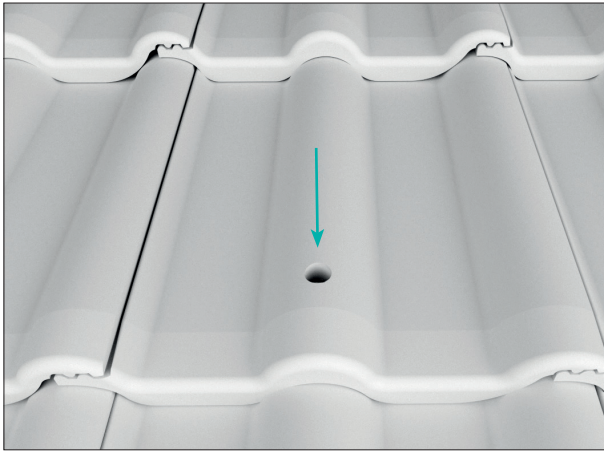


Image 9.4-7

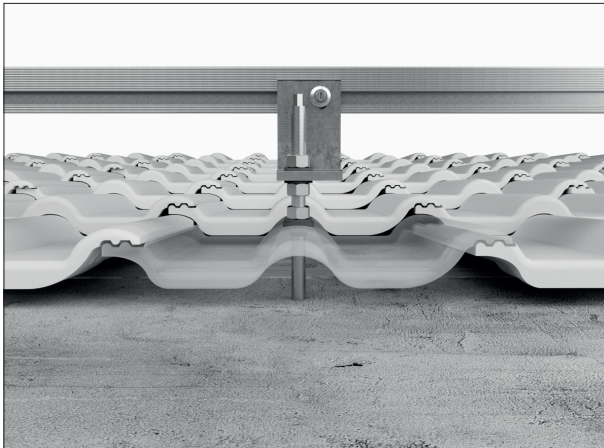


Image 9.4-8



Image 9.4-9

9.5. Roof connection with hanger bolt

Hanger bolts can be used as roof fastenings on concrete roofs. These vary both in the sealing method and in the thread type of the lower part of the screw (timber or metal purlins). Special attention must be given to the proper positioning of the seal.

Installation steps for concrete roofs

- Measure and mark the holes
- Carefully drill through the roof tile to avoid damage
- Drill the hole into the concrete roof
- Secure the hanger bolt or threaded rod appropriately (e.g. wall plug; please note the manufacturer's instructions).
- Leave it to cure completely (Times can vary).
- Finally seal the hole drilled (e.g. chemical anchor)



Caution!

Building damage due to water ingress

Incorrectly installed hanger bolts may lead to leaks.

Please always install the hanger bolts on the on the peak, never in the trough of the tile!

Please ensure the rubber seal or calotte is installed on a clean surface with sufficient pressure!

9.5. Installing Standing Seam Clamps

Standing seam clamps can be used as roof fasteners on standing seam roofs. The design of standing seam clamps varies according to the type of standing seam. It is important to note that for this type of fastening, the roof cladding must be able to absorb the wind suction forces flowing from the PV system. The suitability of the roof cladding and fastener must therefore be verified on site for each project. Additional structural measures such as e.g. an improved fastening of the sheet metal elements on to the purlins might be required.



CAUTION!

Damage to the building and the PV system due to incorrect installation

Incorrectly installed standing seam clamps can break away.

When installing the standing seam clamps, adhere to the torque specified by the manufacturer.



CAUTION!

Damage to the building and the PV system due to an unsuitable roof structure

Installation on unsuitable or inadequately fastened standing seam roofs can result in severe damage to or the breakaway of the sheet metal elements.

Prior to installation, make sure the sheet metal elements and the fastening thereof are suited to permanently carrying the additional PV-system.

Do not install standing seam clamps on unsuitable roof structures!

Make sure to perform any additional structural measures that might be required in accordance with the national and local regulations. If you have any doubts please contact a specialist roofing company!

Mounting steps

- Place the standing seam clamps at the defined fastening points on the standing seam.
- Align standing seam clamps, e.g. with the help of a chalk line.
- Tighten the standing seam clamps. Make sure to adhere to the torques specified by the respective manufacturers of the standing seam clamp.
- Fasten the supplied L-bracket with bolt, washer, lock washer and nut to the clamp (torque 20 Nm).

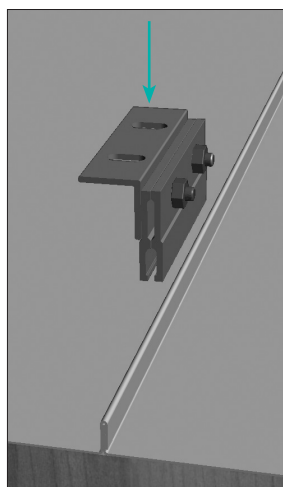


Image 9.5.-1

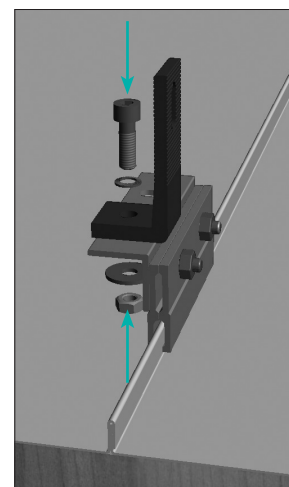


Image 9.5.-2

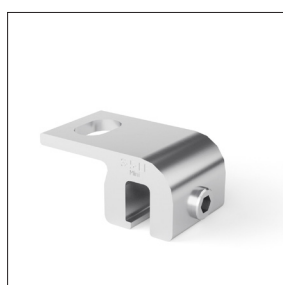
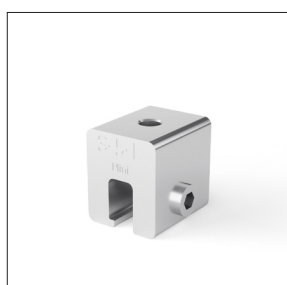
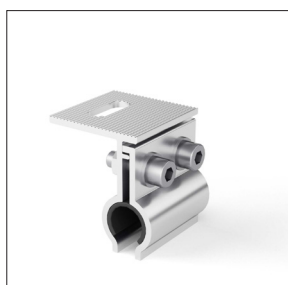


Image 9.5.-3

10. Option: Installation of the CCS-rail



CAUTION!

Material damage by stepping on roof hooks

Stepping on the roof hooks may damage the underlying material, e.g. the roof tiles.

Do not use the roof hooks as stepladders.

10.1 Placing and Alignment of the CCS-rail

The CCS rails are single or multipart depending on the number of modules. The total length of the CCS rail corresponds to the width of the module field. Multipart CCS rails are connected with joiner piece. The last CCS rail of each row must be shortened to the necessary overall length if necessary.

Mounting steps

- The roof hook can be connected at the CCS rail from below or from the side.
- The CCS rails for each module row are mounted loosely on the roof hooks with the aid of T-head bolts (M8 x 25 mm or M10 x 25 mm) as well as hexagonal locking nuts.
- Only at the end tighten the nuts when all base rails are assembled and aligned.
- As an alternative, it is possible to fasten the rails from below with the same components.
- Align the CCS rails in each row with the help of a cord or spirit level.

- Finally tighten the bolts on the roof hooks after the alignment (torque = 12 Nm). In the process, make sure that the T-head is completely transverse to the channel in the rail.
- As an alternative, it is possible to fasten the rails from below with the same components.
- Align the CCS rails in each row with the help of a cord or spirit level
- Finally tighten the bolts on the roof hooks after the alignment (torque = 12 Nm). In the process, make sure that the T-head is completely transverse to the channel in the rail.
- The distance to the roof can be adjusted and unevenness in the roof can be compensated by the oblong hole on the roof hook.

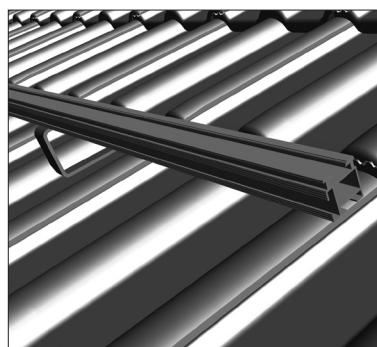


Image 10.1.-1

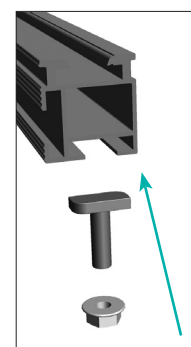


Image 10.1.-2

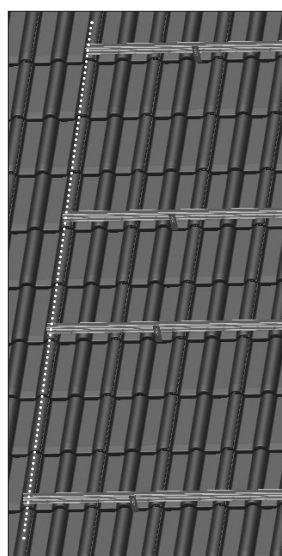


Image 10.1.-3

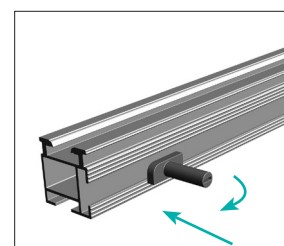


Image 10.1.-4

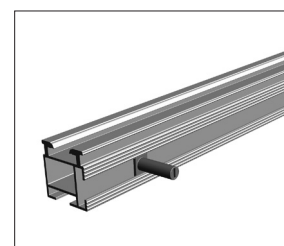


Image 10.1.-5

10.2 Connection of the CCS-rail

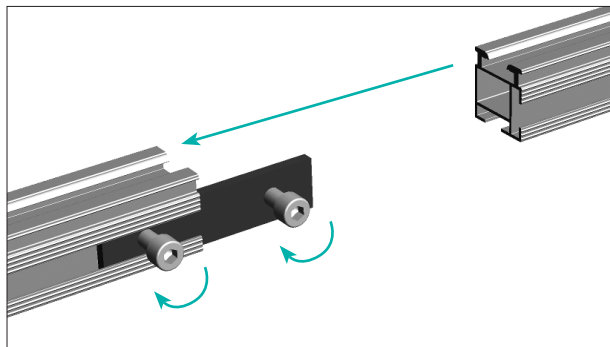


Image 10.2.-1

Mounting steps

- The connector should be slide in half-way from the side of the pre-mounted CCS rails.
- Tighten the first M8 allen bolt (torque = 8 Nm)
- Slide the next base rail into the joiner piece.
- Tighten the second bolt of the connector (torque = 8 Nm).



CAUTION!

Material damage due to incorrect installation

Incorrectly installed T-head bolts may rip out.

When fastening the T-head bolts, always make sure that the T-head sit correctly positioned in the channel.

Do not go below a torque value of 12 Nm.



NOTE!

The connected series of rails should not exceed a length of 12 m.



CAUTION!

Material damage due to incorrect installation

Incorrectly installed T-head bolts can pull out.

When inserting the T-head bolts, always ensure the correct, vertical fit of the bolt head in the channel.

When aligning the rails and during the final fastening of the T-head bolts, make sure that the head of the bolt does not slip into an incorrect position unnoticed.

Adhere to the specified torque of 20 Nm.

11. Cross Rail Installation

For certain structural requirements or roof conditions, a cross rail layout might be necessary. In this case, cross rail connectors are used, which connect both base rail layers with each other. The type of the base rail is irrelevant.

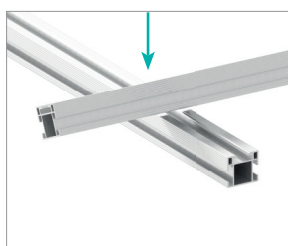
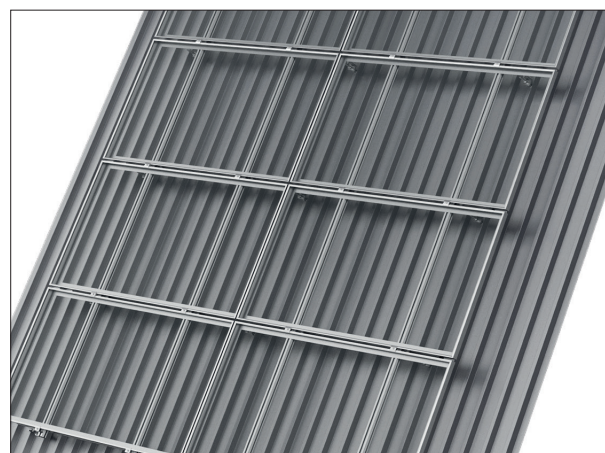


Image 11-1

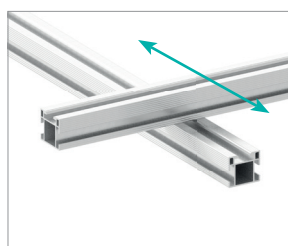


Image 11-2

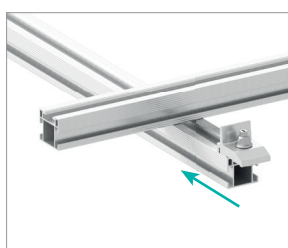


Image 11-3

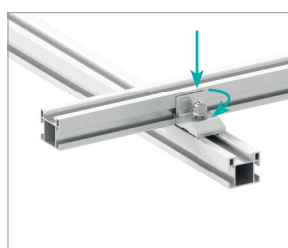


Image 11-4

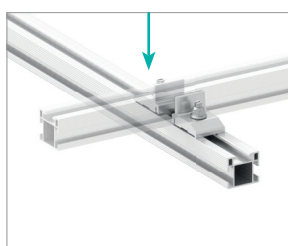


Image 11-5

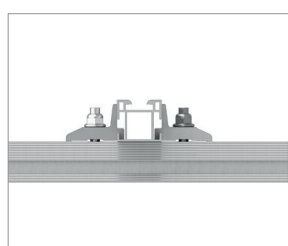


Image 11-6

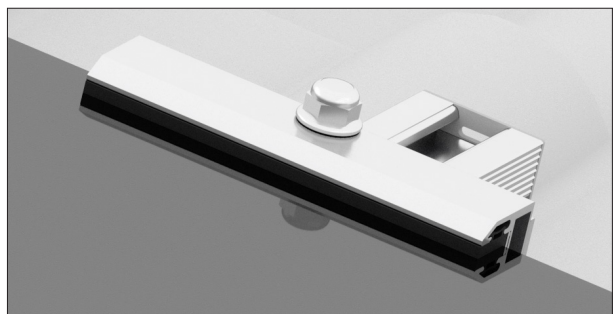
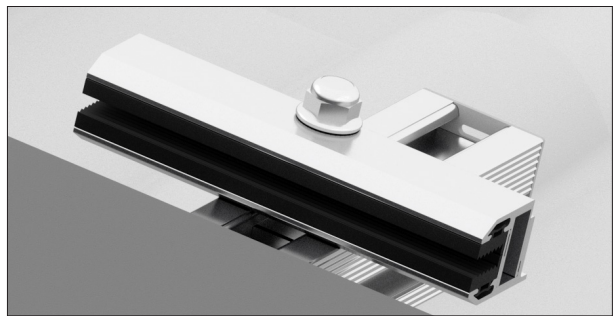
Mounting steps

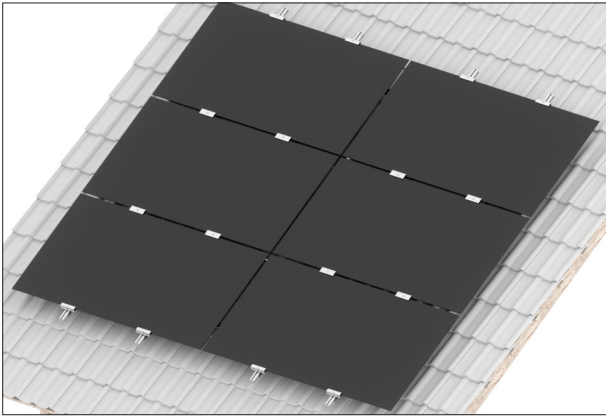
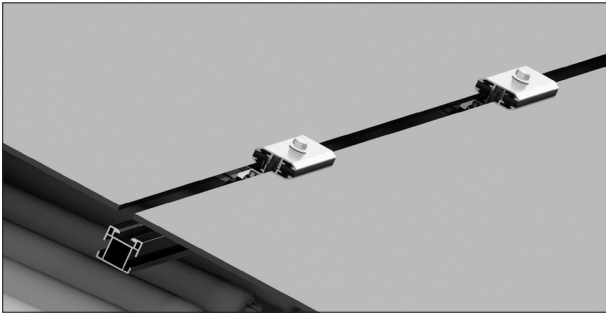
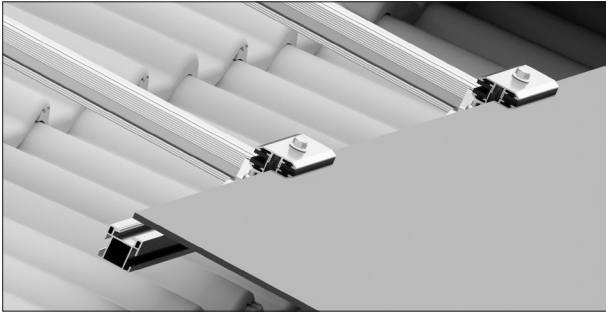
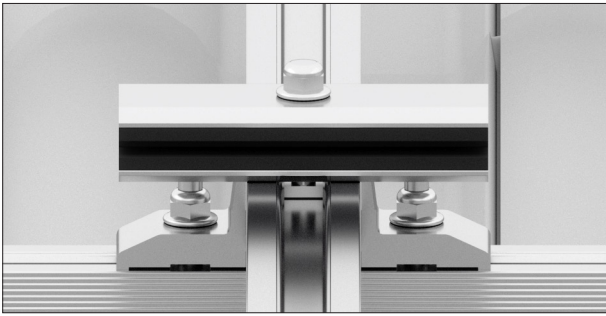
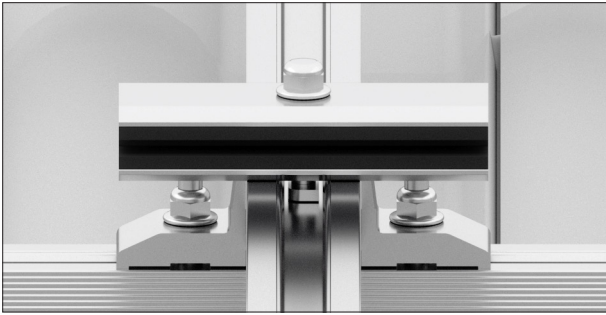
- Place the base rails of the 2nd rail layer at an angle of 90° over the previously mounted rail layer and align.
- Hook the cross rail connector into the side channel of the upper base rail and position in such a way that the T-head bolt fits into the lower base rail.
- Rotate the hammer head screw 90° until it reaches its limit, positioning the head horizontally across the base rail.
- Tighten the locking nut (torque: 20 Nm), thus completing the connection. Make sure the T-head bolt sits correctly in the rail channel.
- Repeat the entire process for the second connector located at the back.

12. Frameless Module Installation

To install frameless modules, the laminate clamps are used.

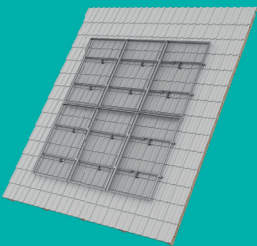
Mounting steps







**mounting
systems**



**Office Rangsdorf
(Headquarter & Production)**

Mounting Systems GmbH
Mittenwalder Straße 9a
D-15834 Rangsdorf
www.mounting-systems.com

Tel: +49 3370 8529 - 100
Fax: +49 3370 8529 - 199
Mail: info-de@mounting-systems.com

**Office Cologne
(Sales Office)**

Mounting Systems GmbH
Rolshover Straße 524
D-51105 Köln
www.mounting-systems.com

Tel: +49 221-29277 - 600
Fax: +49 221-29277 - 629
Mail: info-de@mounting-systems.com