

## SolidSwitch 104

A 70V/4A solid state switch

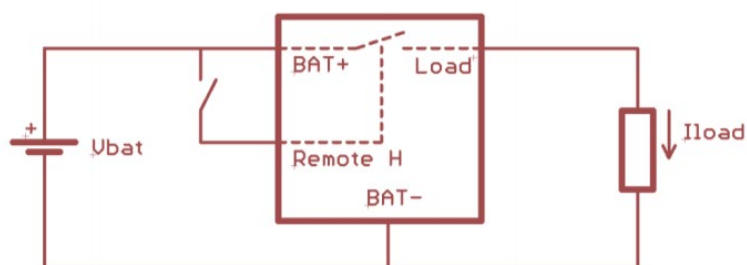
[www.victronenergy.com](http://www.victronenergy.com)

The SolidSwitch 104 will switch DC loads of up to 70V/4A and can be controlled by a low power digital signal.

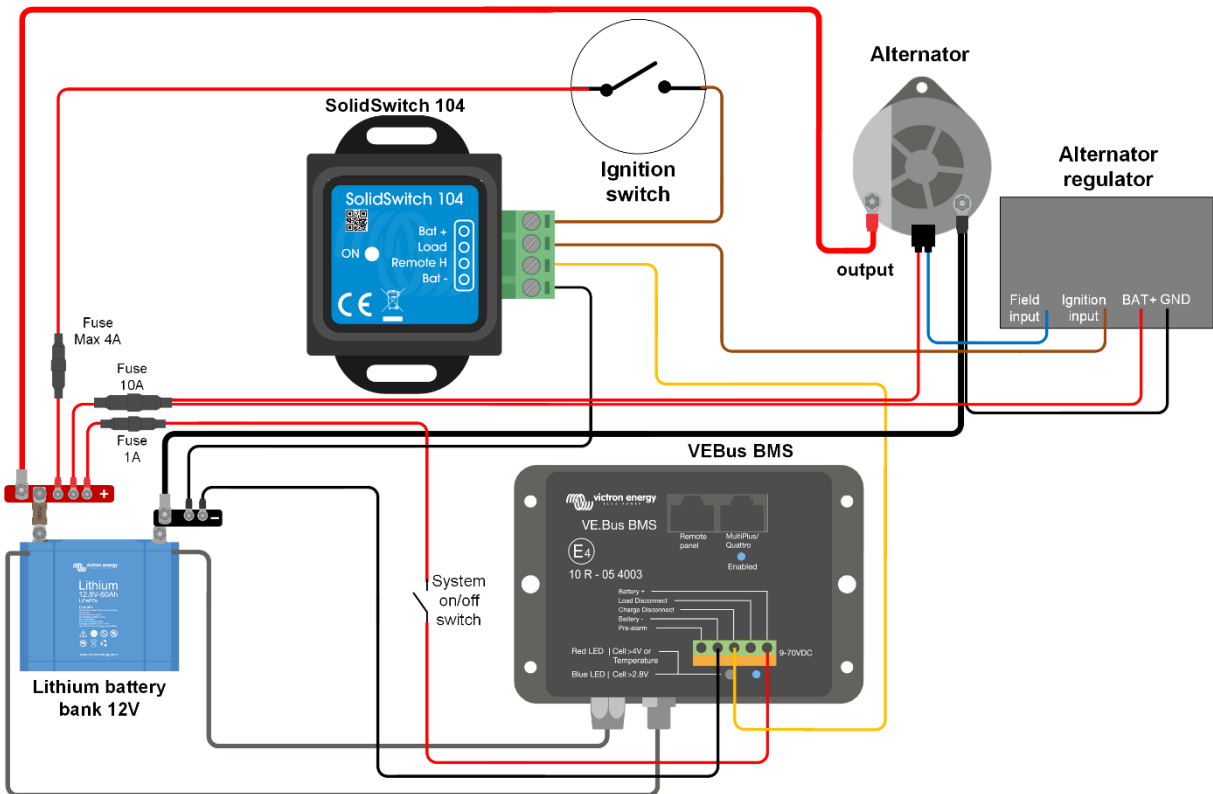
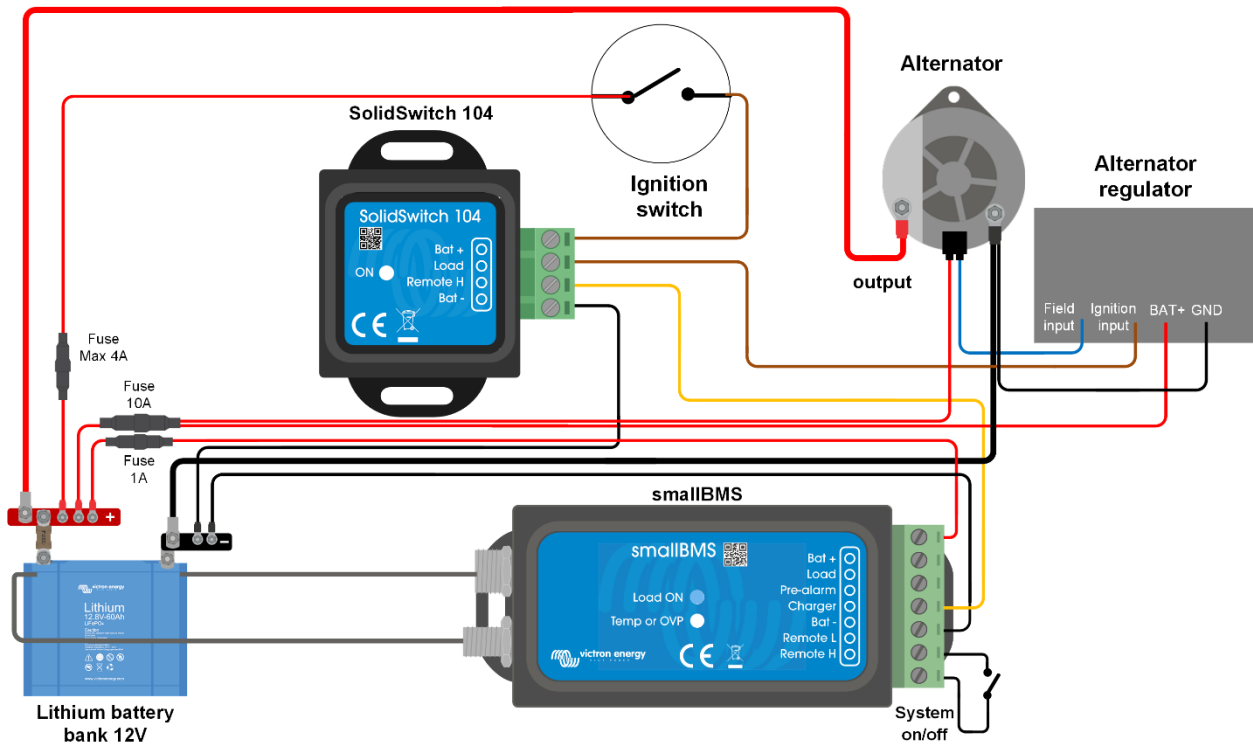
The DC load can be resistive, capacitive or inductive (such as the coil of a high-power contactor).

The SolidSwitch is not reverse polarity protected and not short circuit proof.

SolidSwitch 104	
Operating Input voltage range (Vbat)	8 – 70V DC
Maximum load current	4A
Maximum capacitive load	Vbat up to 15V: 1000 $\mu$ F 15V < Vbat < 30V: 400 $\mu$ F 30V < Vbat < 70V: 50 $\mu$ F
Maximum inductive load	Up to 1A: 1000 mH 1A < I < 2A: 100 mH More than 2A: 10 mH
Remote input (Vin)	Free floating or Vin < 3V: load off 3,3V < Vin < 70V: load on Min. input current to switch on: 30 $\mu$ A
Operating temperature	-20 to +50°C    0 - 120°F
Humidity	Max. 95% (non-condensing)
Protection grade	IP20
Material and colour	ABS, matt black
Dimensions (h x w x d)	58 x 66 x 23 mm



Functional diagram



Alternator control: the alternator is switched off when the BMS gives a charger alarm.