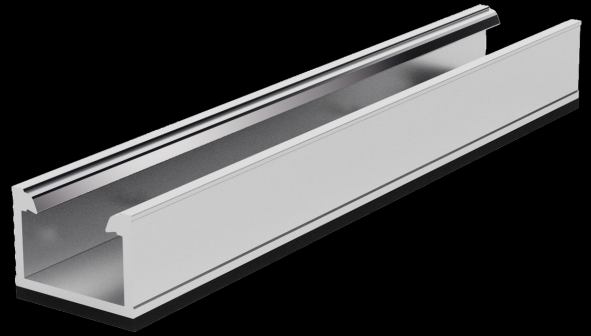


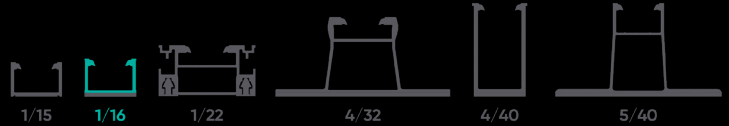


mounting  
systems



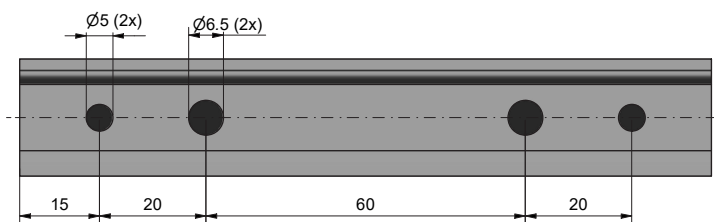
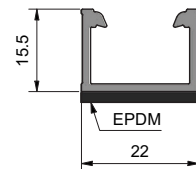
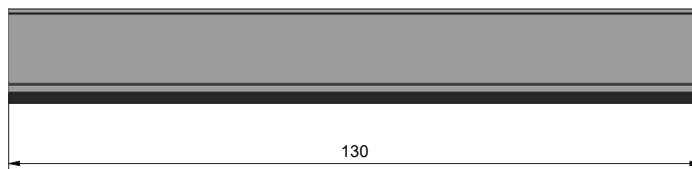
Item No.  
720-1809

Ref. No.  
712-0262



## Rail 1/16\* with EPDM

Application	Trapeze
Material	Aluminium (EN-AW-6063 T66)
Colour	Aluminium: Natural
Weight	0.037 kg
Dimensions H x W	15.5 x 22 mm
Length	130 mm
Static values	$I_x$ 0,270 cm <sup>4</sup> $I_y$ 0,657 cm <sup>4</sup> $W_x$ 0,302 cm <sup>3</sup> $W_y$ 0,597 cm <sup>3</sup> A 0,890 cm <sup>2</sup>
Accessories	Thin sheet screw 5.5x25 mm (720-1188)



\* The first number in the designation of the rail profiles stands for the moment of inertia cm<sup>4</sup> and the second number describes the height mm of the rail.

