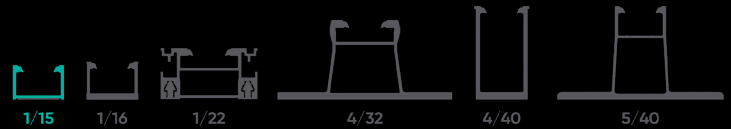
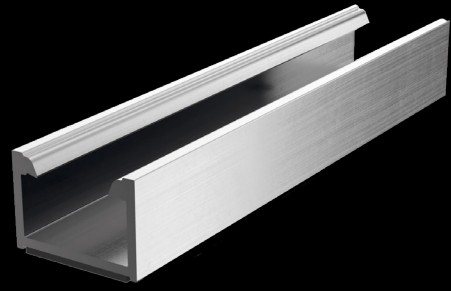


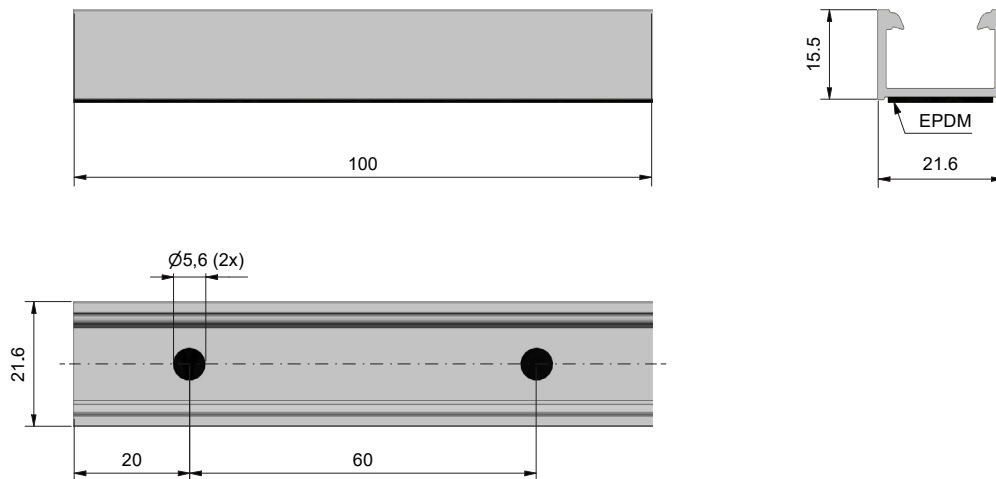


mounting  
systems



## Rail 1/15\* with EPDM

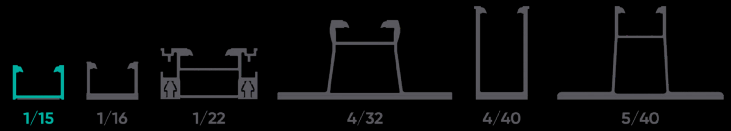
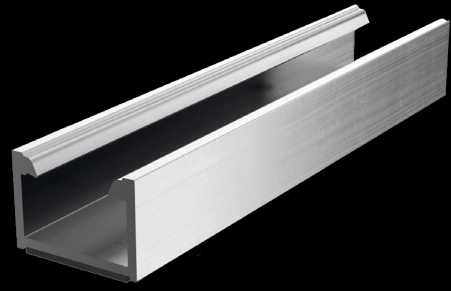
Application	Trapeze
Material	Aluminium (EN-AW-6063 T66)
Colour	Aluminium: Natural
Weight	0.260 kg/m
Dimensions H x W	15.5 x 21.6 mm
Length	100 mm
Static values	$I_x$ 0,249 cm <sup>4</sup> $I_y$ 0.642 cm <sup>4</sup> $W_x$ 0.283 cm <sup>3</sup> $W_y$ 0.594 cm <sup>3</sup> A 0.880 cm <sup>2</sup>
Accessories	Thin sheet screw 5.5x25 mm (720-1188)



Technical amendments reserved.  
2024 © Mounting Systems GmbH



mounting  
systems



## Rail 1/15\* with EPDM

Length	Colour	Item No.	Ref. No.
100 mm	Natural	720-1627	712-0137
6000 mm without drilling holes	Natural	712-0175	712-0175

\* The first number in the designation of the rail profiles stands for the moment of inertia cm<sup>4</sup> and the second number describes the height mm of the rail.



Technical amendments reserved.  
2024 © Mounting Systems GmbH