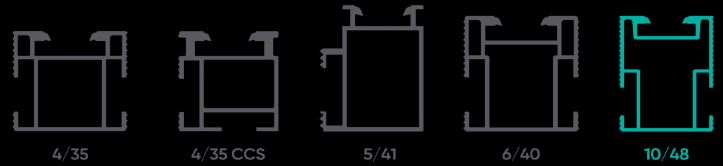
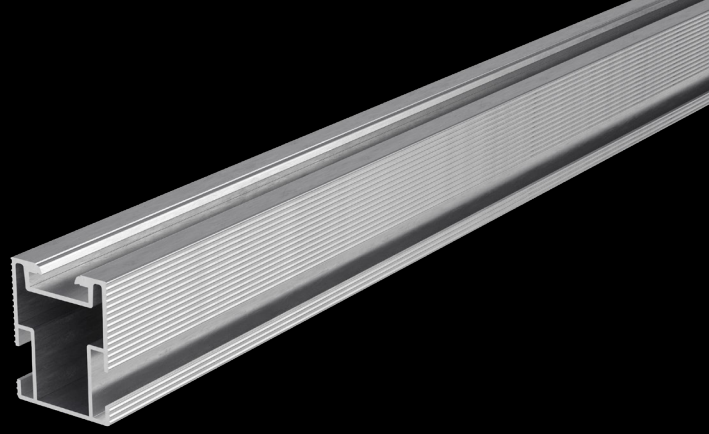


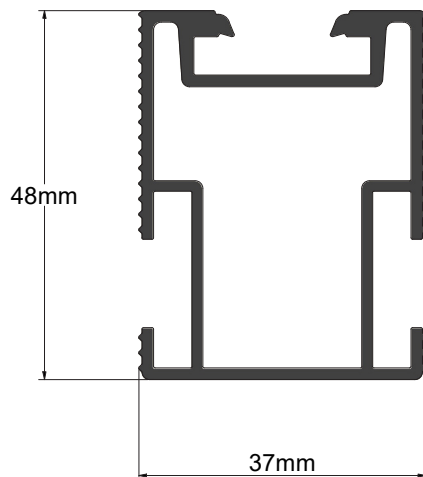


mounting
systems



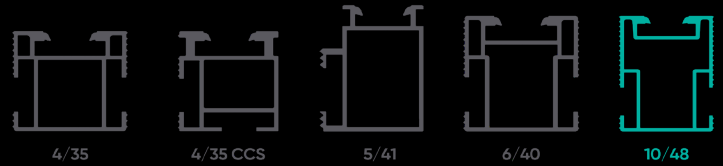
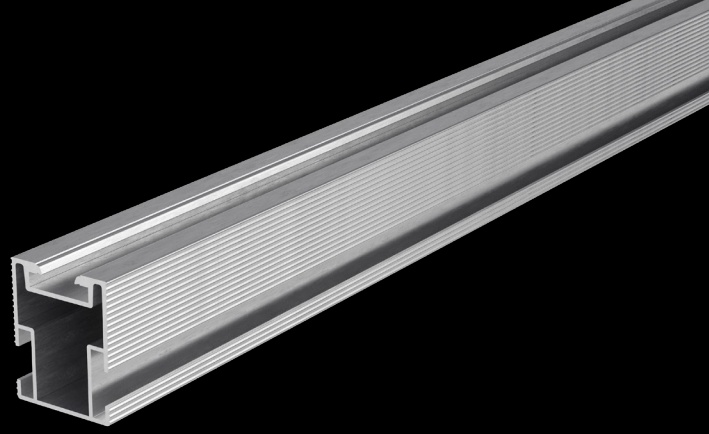
Base Rail 10/48*

Application	Pitched
Material	Aluminium (EN-AW-6063 T66)
Colour	Aluminium: Natural, black anodised
Weight	0.97 kg/m
Dimensions H x W	48 x 37 mm
Static values	I_x 10.220 cm ⁴ I_y 6.417 cm ⁴ W_x 3.945 cm ³ W_y 3.437 cm ³ A 3.595 cm ²
Article addition	Lateral connections with t-head bolt with lock nut. Top connection with Clickstone and t-head bolt with lock nut connection for the additional component possible.
Accessories	Connector 10/48 (720-1660) End Cap 10/48 Grey (720-1630) End Cap 10/48 Black (720-1633)





mounting
systems



Base Rail 10/48* – Length

Length	Colour	Item No.	Ref. No.
2400mm	Natural	800-1341	800-1341
2500mm	Natural	800-1463	800-1463
	Black anodised	800-1464	800-1464
3600mm	Natural	800-1465	800-1465
	Black anodised	800-1466	800-1466
4150mm	Natural	800-0025	800-0025
4400mm	Natural	800-1413	800-1413
6000mm	Natural	800-1132	800-1132
	Black anodised	800-1468	800-1468

* The first number in the designation of the rail profiles stands for the moment of inertia cm⁴ and the second number describes the height mm of the rail.



Technical amendments reserved.
2024 © Mounting Systems GmbH